



Pre-Submittal Meeting

CITY OF PHOENIX

WATER SERVICES DEPARTMENT

LIFT STATION 43 FORCE MAIN REHABILITATION

CONSTRUCTION MANAGER AT RISK SERVICES

PROJECT NO. WS90501000

SEPTEMBER 9, 2024

Welcome and Introductions

Only Point of Contact for Submittal and Questions

Heather Roye, Contract Specialist II

heather.roye@phoenix.gov

(602) 261-8894

Marcel Begay, Civil Engineer III (Project Manager)
Water Services Department

Martha Perches, Equal Opportunity Programs Assistant
Equal Opportunity Department
602-495-5259

Meeting Overview

- ❑ Sign-in please. If you are attending on-line, please email me your name, firm's name, contact number and email address so that I can add your name to the sign-in sheet.
- ❑ Sign-in sheet and PowerPoint will be posted on City of Phoenix's ProcurePHX system (RFx 6000001660)

<https://eprocurement.phoenix.gov/irj/portal>

and

City of Phoenix Procurement's website:

<http://phoenix.gov/streets/procurement/current-opportunities>

- ❑ It is your responsibility as a RFQ holder to determine, prior to submittal, if any Notifications have been issued. Please check both websites to see if a Notification was issued.

Meeting Overview

- ❑ Please hold questions until the Q&A period
- ❑ This is the **ONLY** opportunity to discuss this project with City staff

Vendor Registration

- ✓ All firms **MUST** be registered in the Vendor Management System **PRIOR TO** submitting a proposal
- ✓ New Firms - After registering, the City will send an e-mail with a vendor number in approximately 2 days

Information on how to register with the City is available at:

<https://www.phoenix.gov/finance/vendorsreg>



Design and Construction Procurement **is in need of participants outside the city to be part of the selection panel process**. If you have never attended the selection panel training, or if it has been three years since you attended training and you need a refresher, please contact Daniel Valladee to sign up for one of our upcoming training classes. If you have attended our training but are now with another company, contact Daniel Valladee to update your contact information.

daniel.valladee@phoenix.gov or 602-534-3286

Consultant participants on Study/Design/Consulting Services panels should be a Project Manager or above (a professional technical registration is not required).

General Contractor participants on the Construction Services panels must be a senior management employee of a licensed contractor pursuant to ARS Title 34.

DCP WEEKLY NEWSLETTER

To see upcoming CIP projects, sign up for our weekly DCP Newsletter, please use link below:

[Form \(phoenix.gov\)](#)

Agenda

- ❑ SBE
- ❑ Project Description and Scope of Work
- ❑ Evaluation Criteria
- ❑ SOQ Due Date
- ❑ Questions

SBE Goal will be set prior
to construction of this
project

Small Business Enterprise Program (SBE)

► Goal Setting Methodology

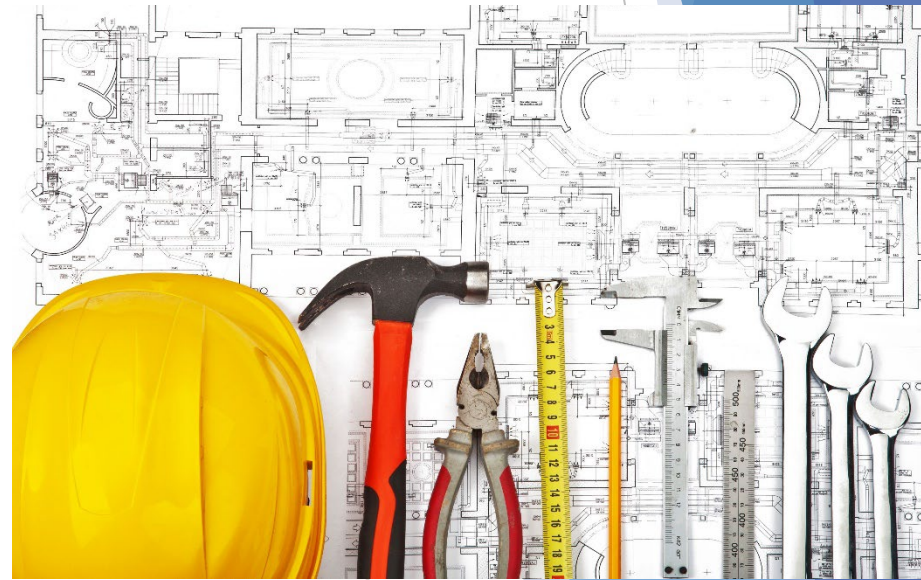
- ✓ Goals are established by City of Phoenix Goal Setting Committee
- ✓ Successful Prime will work with the Small Business Engagement Team prior to goal setting
- ✓ No established SBE goal for Design Phase
- ✓ SBE goal for construction phase will be established upon substantial completion of design



Small Business Enterprise Program (SBE)

▶ Pre-Award Requirements:

- ✓ No SBE documents due at time of submittal
- ✓ Outreach Efforts and SBE Plan should be actively in development
- ✓ Document - Document - Document



Small Business Enterprise Program (SBE)




- ▶ Post-Award Requirements:
- ▶ To locate certified firms:
- ▶ <https://phoenix.diversitycompliance.com>
- ▶ Select: Directory of SBE Certified Firms

- ▶ REMEMBER:
- ▶ Confirm certification status of a firm
- ▶ Confirm certified scope of work
- ▶ Letters of Intent to Perform as an SBE Subcontractor/Supplier
- ▶ Statement of Proposed SBE Utilization must be reviewed and approved by EOD prior to execution of each GMP

To locate certified firms visit:

<https://phoenix.diversitycompliance.com>

Select:
City of
Phoenix
Directory
of
SBE
Certified
Firms



Certification & Compliance System

City of Phoenix

[Home/Login](#)

System Access Login

Username:

Password:

- [City of Phoenix Directory of SBE Certified Firms](#)
- [Apply for Certification, Annual Update, Affidavit of Change](#)
- [Contact Us & Support](#)
- [Account Lookup](#)
- [Forgot Password](#)
- [Help/First Time Visitors](#)

The City of Phoenix is pleased to offer its **SBE/DBE/ACDBE Certification & Contract System**. This web-based software system is accessible to all City departments, certified firms, contractors and the public; and includes the following key features:


- Enhanced online SBE Directory, with key-word search capabilities
- Communication with contractors via email, regarding compliance issues
- Submission of contractors' monthly utilization reports online, and automated tracking of contract goals
- Subcontractor verification of payments
- Tracking of certification applications from submission to completion
- Flexible reporting capabilities

[Customer Support](#)

The City of Phoenix Certification & Compliance System is powered by [B2Gnow](#) software.

Small Business Outreach and Compliance

REMEMBER
confirm
certification
status of a
firm



Certification & Compliance System

City of Phoenix

[Home/Login](#)

City of Phoenix SBE Certification Directory

Search the City of Phoenix's Small Business Enterprise Directory by entering search terms and clicking **Search**. You must select at least one certification type.

Search results may be downloaded to Excel, by clicking the **Download Results to Excel** button after your search results are displayed. To download the full Certification Directory do not enter search criteria, scroll to the bottom of the page to click the **Download Entire Directory to Excel** button.

Search by Business Name or DBA

Business Name/DBA
Tip: Try just a few letters of the firm's name.

Search by Business Description

Business Description

Search by Commodity Code

Commodity Code [Click to Lookup Commodity Code](#)
(popup window will appear to browse and search available Commodity Codes)

Search by Contact Person

Contact Person/Owner

First name	<input type="text"/>	Last name	<input type="text"/>
------------	----------------------	-----------	----------------------

Tip: Use the first letter. Tip: Try just the first few letters.

Search by Location

City

State

Zip Code

Phone Area Code

Search by Certification Type

Certifications Small Business Enterprise (SBE)

Download Entire Directory:

Include Commodity Codes in download

[Customer Support](#) The City of Phoenix Certification & Compliance System is powered by [B2Gnow](#) software.

SBE - Contact Information

Martha Perches

Equal Opportunity Programs Assistant

Equal Opportunity Department

200 W. Washington Street, 15th Floor

Phoenix, AZ 85003

602-495-5259

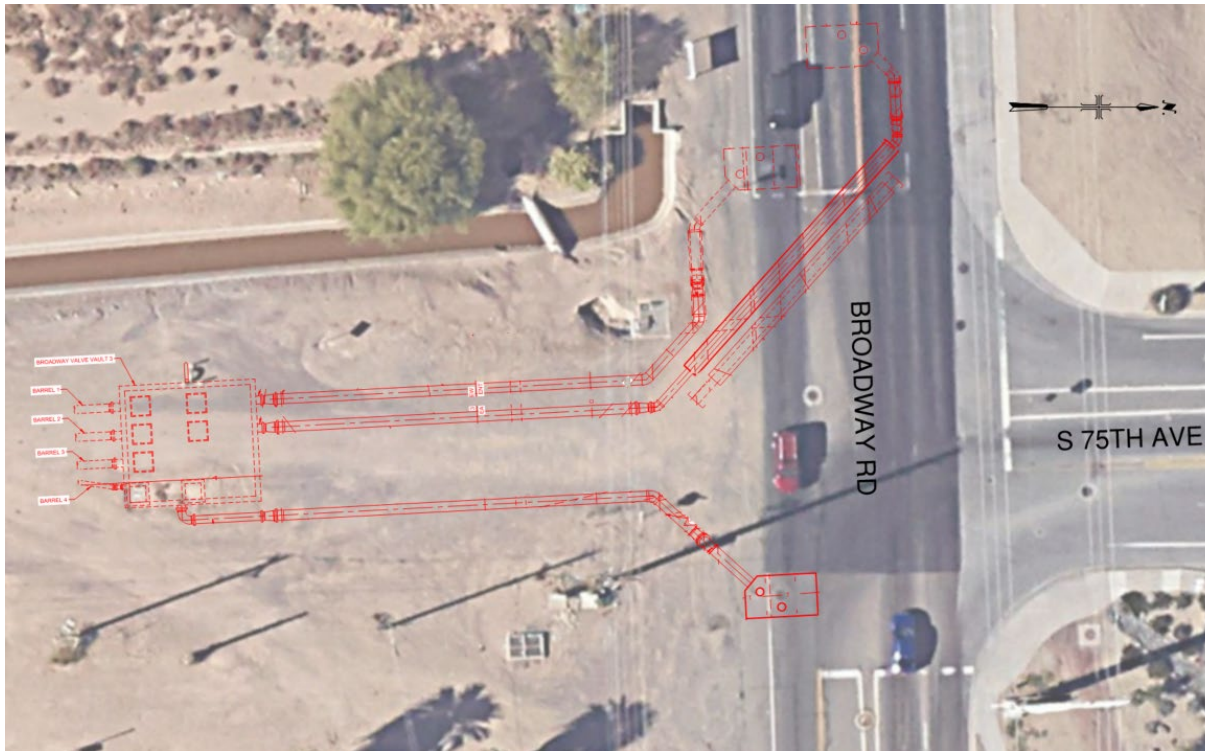
martha.perches@phoenix.gov

Project Manager

Marcel Begay

PROJECT DESCRIPTION

The force mains associated with Lift Station 43 convey wastewater flows from the lift station located near 75th Avenue and Vineyard Road north approximately 7,920 LF along the 75th Avenue alignment to Broadway Road. There are currently three (3) 24-inch Ductile Iron Pipe (DIP) force mains. The one (1) 12-inch force main is no longer connected to the lift station and is not in service.



SCOPE OF WORK

Work under the Lift Station 43 Force Main Rehabilitation Project includes but is not limited to:

- Install new 2-inch air release valves on each barrel in a new precast vault.
- Install new 3-inch combination air valves on each barrel in a new precast vault.
- Recoat all exposed surfaces (pipe, valves, supports, etc.) in the Broadway Valve Vault
- Seal vault lids to mitigate inflow causing corrosive conditions.

SCOPE OF WORK

- Jack and bore realignment of existing pipe in steel casing crossing the Southern Avenue Interceptor (SAI) and Salt River Outfall (SRO) in Broadway Road.
 - Abandon existing pipe and casing.
 - Install new 24-inch HDPE in a new steel casing.



SCOPE OF WORK

- Barrel No. 1 – Open cut pipe replacement in the same alignment as the existing pipe with 30-inch High-Density Polyethylene (HDPE) pipe. Replace all pipe from the Broadway Valve Vault to the new HDPE terminal pipe in Discharge Vault No. 1.
- Barrel No. 2 – Open cut pipe replacement in the same alignment as the existing pipe with 30-inch HDPE pipe. Replace all pipe from the Broadway Valve Vault to the south limit of the jack and bore replacement under the SAI and SRO.

SCOPE OF WORK

- Barrel No. 3 – Provide fully redundant force main from Broadway Valve Vault to Broadway Road.
 - Pipe modifications in the valve vault to extend existing Barrel No. 3 with 24-inch DIP to the SRO.
 - Open cut replacement of existing 12-inch DIP with upsized 30-inch HDPE force main.
 - Replace existing discharge manhole with new discharge structure for outfall from Barrel No. 3 to the SRO.

SCOPE OF WORK

▶ Pre-Construction CMAR Services

- provide detailed cost estimating and knowledge of marketplace conditions
- provide project planning and scheduling
- provide for construction phasing and scheduling that will minimize interruption to City operations
- provide alternate systems evaluation and constructability studies
- advise City on ways to gain efficiencies in project delivery
- provide long-lead procurement studies and initiate procurement of long-lead items

SCOPE OF WORK

- ▶ Pre-Construction CMAR Services (Continued)
 - assist in the permitting processes
 - participate with the City in a process to set a goal for local and SBE participation and implement the local and SBE process
 - protect the City's sensitivity to quality, safety, and environmental factors
 - advise City on choosing green building materials.

SCOPE OF WORK

- ▶ Construction Phase Services
 - construct wastewater infrastructure for Lift Station 43 Force Main Rehabilitation project
 - prepare a Guaranteed Maximum Price (GMP) proposal that meets the approval of the City
 - coordinate with various City of Phoenix departments, other agencies, utility companies, etc.
 - arrange for procurement of materials and equipment
 - schedule and manage site operations

SCOPE OF WORK

▶ Construction Phase Services (Continued)

- bid, award, and manage all construction related contracts while meeting City bid requirements including the local and SBE participation goal
- provide quality controls
- bond and insure the construction
- address all federal, state and local permitting requirements
- deal with City issues
- maintain a safe work site for all project participants

Statement of Qualifications Criteria

- ❑ General Information - 150 points
- ❑ Experience and Qualifications of the Firm - 250 points
- ❑ Experience of Key Personnel to be Assigned to this Project - 250 points
- ❑ Understanding of the Project and Approach to Performing the Required Services - 350 points
- ❑ *Reference Check - up to 21 points

*These points are in addition to the 1,000 points for the SOQ

- Provide responses in the order listed in Section IV of the RFQ
- Be complete, be concise

Vendor Registration

- ❑ To do business with the City you **MUST** register in procurePHX at:

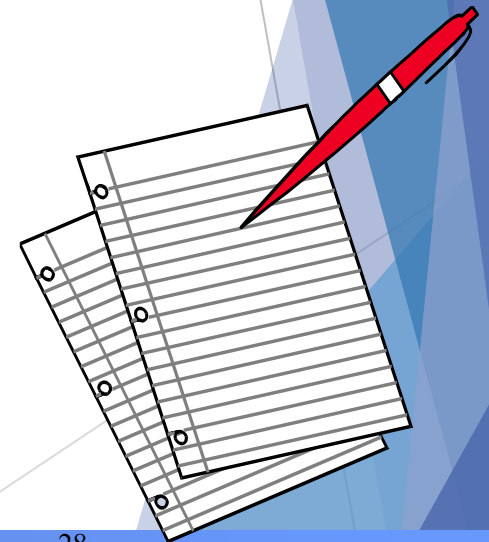
<https://www.phoenix.gov/financesite/Pages/EProc-help.aspx>

It takes the city about two business days to approve the registration.

- ❑ The City will email confirmation with vendor number.
- ❑ For questions about **procurePHX**, please send an email to vendor.support@phoenix.gov

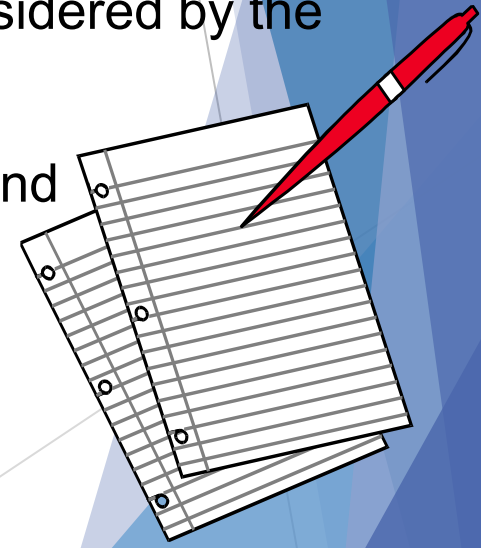
Statement of Qualifications Criteria

- ❑ Information Sheet
 - ❑ Provide only the information that is required in the RFQ. Make sure you use your firm's legal name
 - ❑ SOQ's will be emailed to heather.roye@phoenix.gov by due date and time
 - ❑ Email file size is 150 mb
 - ❑ A maximum of 12 pages
 - ❑ Font size no less than 10 point
 - ❑ Paper size 8 ½" x 11"



Statement of Qualifications Criteria

- ❑ Each page side with criteria information will be counted.
- ❑ Pages that have photos, charts, and graphs will be counted toward maximum number of pages.
- ❑ Information Sheet, front and back covers, Table of Contents and tab dividers will NOT be counted toward the maximum page limit, UNLESS they include information that may be considered by the selection panel.
- ❑ Bonding statement will be a separate attachment and emailed with your SOQ



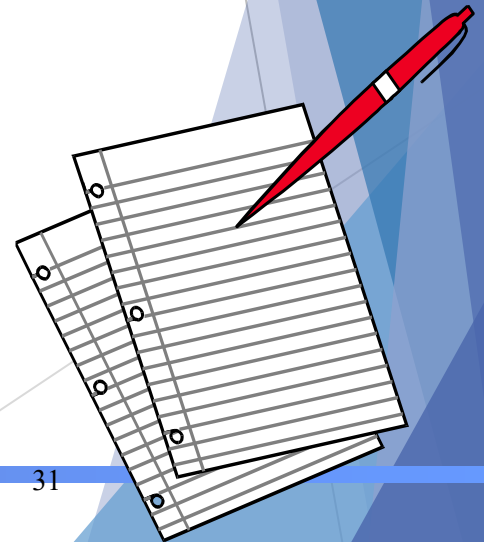
Grounds for Disqualification

- ❑ Receipt of SOQ after the specified cut-off date and time
- ❑ Failure to provide bonding statement
- ❑ Violating the “Contact with City Employees” policy

Statement of Qualifications Criteria

- ❑ SOQ due: 12:00 pm Noon - Arizona local time
Friday, September 20, 2024

Email to heather.roye@phoenix.gov



Design & Construction Procurement Selection Process and Schedule

- Pre-Submittal Meeting September 9, 2024
- SOQs Due September 20, 2024
- Evaluation Meeting October 3, 2024
- Scope of Work Meeting October 2024

Questions After Today

E-mail your questions to:

heather.roye@phoenix.gov

Thank You !!!

OPEN FOR QUESTIONS & THANK YOU FOR ATTENDING

Reminder for those of you on-line to send me your information after the meeting so I can add you to the sign-in sheet