

CITY OF PHOENIX GENERAL LANDSCAPE NOTES

- THE CITY OF PHOENIX GENERAL NOTES ARE THE ONLY NOTES APPROVED ON THIS PLAN BY THE CITY OF PHOENIX. ADDITIONAL GENERAL NOTES GENERATED BY THE SEALANT AND PLACED ON THE PLANS ARE NOT APPROVED AS PART OF THIS PLAN AND ARE NOTED AS SUCH ON THE PLANS.
- THE DESIGN ON THESE PLANS IS ONLY APPROVED BY THE CITY IN SCOPE AND NOT IN DETAIL. CONSTRUCTION QUANTITIES ON THESE PLANS ARE NOT VERIFIED BY THE CITY. APPROVAL OF THESE PLANS ARE FOR PERMIT PURPOSES ONLY AND SHALL NOT PREVENT THE CITY FROM REQUIRING CORRECTION OF ERRORS IN THE PLANS WHERE SUCH ERRORS ARE SUBSEQUENTLY FOUND TO BE IN VIOLATION OF ANY LAW, ORDINANCE, HEALTH, SAFETY, OR OTHER DESIGN ISSUES.
- CONSTRUCTION WITHIN THE RIGHT-OF-WAY SHALL CONFORM TO THE LATEST APPLICABLE MARICOPA ASSOCIATION OF GOVERNMENTS (MAG) UNIFORM STANDARD SPECIFICATIONS AND DETAILS AND THE LATEST CITY OF PHOENIX SUPPLEMENT TO THE MAG UNIFORM STANDARD SPECIFICATIONS AND DETAILS.
- FINAL BUILDING PERMIT CANNOT BE OBTAINED UNTIL BONDING OR APPROVED ASSURANCES IS PROVIDED FOR THE LANDSCAPING WITHIN THE RIGHT-OF-WAY.
- NO PLANT SUBSTITUTIONS, TYPE, SIZE, OR QUANTITY, OR DEVIATIONS FROM THE APPROVED LANDSCAPE OR IRRIGATION PLANS, ARE ALLOWED WITHOUT PRIOR APPROVAL FROM THE CITY OF PHOENIX LANDSCAPE SECTION AT 602.262.7811.
- ALL PLANT MATERIAL AND SPECIFICATIONS SHALL CONFORM TO THE ARIZONA NURSERYMAN ASSOCIATIONS STANDARDS. ALL RIGHT-OF-WAY AND CITY REQUIRED (PERIMETER, RETENTION, AND PARKING) PLANT MATERIAL SHALL BE IN COMPLIANCE WITH THE DEPARTMENT OF WATER RESOURCES LOW WATER USE PLANT LIST.
- CONTACT THE PARKS & RECREATION DEPARTMENT, FORESTRY SUPERVISOR, AT 602-262-6862, TO VERIFY OWNERSHIP OF ANY PLANT MATERIAL IN THE PUBLIC R.O.W. PRIOR TO ANY PLANT RE-LOCATIONS OR REMOVALS. OBTAIN WRITTEN PERMISSION FROM THE PARKS & RECREATION DEPARTMENT PRIOR TO THE RE-LOCATION OR REMOVAL OF ANY CITY PLANT MATERIAL OR EQUIPMENT.
- CONTACT THE STREET TRANSPORTATION DEPARTMENT, HORTICULTURIST, AT 602-262-6284, PRIOR TO THE RE-LOCATION OR REMOVAL OF EXISTING PLANT MATERIAL IN THE A.D.O.T. R.O.W. THAT IS ON THE CITY'S SIDE OF THE

- SOUND WALL. OBTAIN WRITTEN PERMISSION FROM THE STREET TRANSPORTATION DEPARTMENT PRIOR TO THE RE-LOCATION OR REMOVAL OF ANY PLANT MATERIAL OR EQUIPMENT.
- ALL EXISTING TREES AND SHRUBS IN RIGHT-OF-WAY DESIGNATED TO REMAIN BUT ARE DAMAGED OR DESTROYED WILL BE REPLACED IN LIKE SIZE AND KIND BY THE CONTRACTOR.
- THE PROPOSED IRRIGATION SYSTEM SHALL INCLUDE ANY MODIFICATIONS REQUIRED TO TIE THE EXISTING CITY OF PHOENIX IRRIGATION SYSTEM IN RIGHT-OF-WAY TO THE PROPOSED SYSTEM. ALL THROUGH IRRIGATION SYSTEMS IN THE RIGHT-OF-WAY SHALL BE MAINTAINED. THE CONTRACTOR SHALL BE RESPONSIBLE FOR CAPPING AND/OR ABANDONING EXISTING IRRIGATION TO PLANT MATERIALS AND PROVIDING NEW IRRIGATION TO THE EXISTING PLANT MATERIAL, IN RIGHT-OF-WAY, PER THE APPROVED PLAN.
- WALLS ARE NOT APPROVED AS PART OF LANDSCAPE PLAN BUT ARE SHOWN FOR REFERENCE ONLY.
- TREES ADJACENT TO PEDESTRIAN WALKWAYS SHOULD HAVE A MINIMUM CANOPY CLEARANCE OF SIX FEET EIGHT INCHES (6'-8") PER SECTION 507 TAB A.II.A.3.1.10 OF THE CITY OF PHOENIX ZONING ORDINANCE.
- P.V.C. PIPE LATERALS ARE REQUIRED. A MAXIMUM OF FIVE FEET (5') OF POLY TUBING OFF OF THE P.V.C. PIPE LATERAL IS ALLOWED. NO POLY TUBING LATERALS ARE ALLOWED.
- PLANT QUANTITIES AND CALIPER SIZES, PER THE SPECIFIC ZONING REQUIREMENTS FOR THIS SITE, PROVIDED IN THE LEGEND ON THE APPROVED PLAN AND ARE REQUIRED TO BE INSTALLED IN THE FIELD. ANY DEVIATIONS FROM THE PLAN WILL REQUIRE A REVISION TO THE APPROVED PLAN. NOTE: MINIMUM CALIPER SIZE IS A ZONING REQUIREMENT. IF THE MINIMUM CALIPER REQUIREMENT CANNOT BE MET AT THE BOX SIZE THAT IS SPECIFIED, THEN THE BOX SIZE MUST BE INCREASED TO MEET CALIPER REQUIREMENTS.
- PLAN APPROVAL IS VALID FOR 180 DAYS. PRIOR TO PLAN APPROVAL EXPIRATION, ALL ASSOCIATED PERMITS SHALL BE PURCHASED OR THE PLANS SHALL BE RESUBMITTED FOR EXTENSION OF PLAN APPROVAL. THE EXPIRATION, EXTENSION, AND REINSTATEMENT OF LANDSCAPE PLANS AND PERMITS SHALL FOLLOW THE SAME GUIDELINES AS THOSE INDICATED IN THE PHOENIX BUILDING CONSTRUCTION CODE ADMINISTRATIVE PROVISIONS SECTION 105.3 FOR BUILDING PERMITS.

EDISON IMPACT HUB

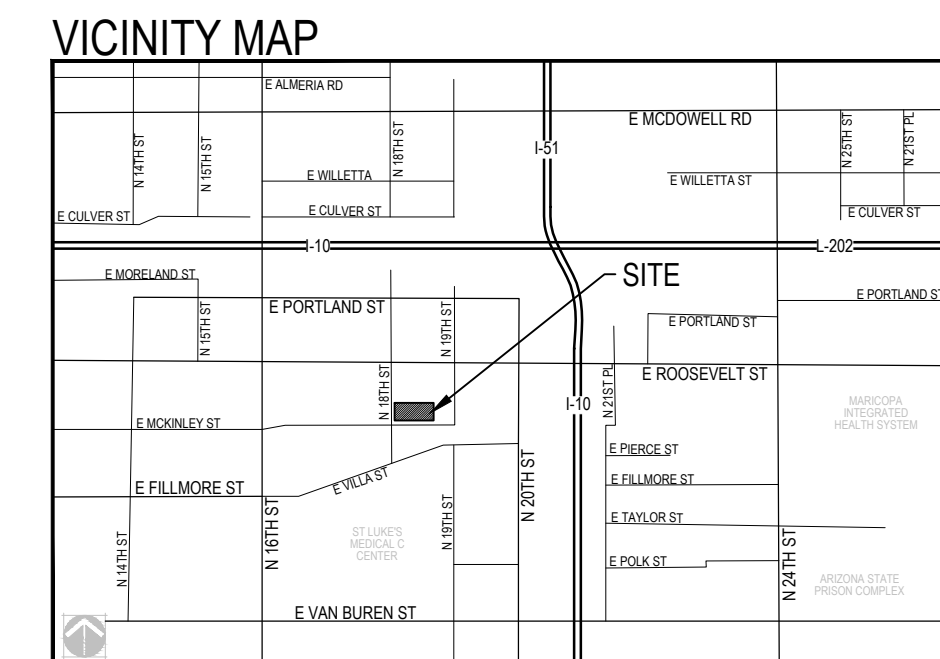
PUBLIC ART

1855 E GARFIELD ST

AH20300003-2

PROJECT TEAM:

<p>OWNER CITY OF PHOENIX HOUSING DEPARTMENT 251 W WASHINGTON ST, 4TH FLOOR PHOENIX, AZ 85003 PHONE: 602-256.3338 WEBSITE: www.phoenix.gov</p>	<p>ARTIST / CLIENT LA CERAMICA, LLC TUCSON, AZ CONTACT: NINA BORGIA-ABERLE PHONE: 520-275-5035 EMAIL: info@ninaborgiaaberle.com</p>	<p>STRUCTURAL ENGINEER SCHNEIDER ENGINEERING 435 E 9TH ST TUCSON, AZ 85705 PHONE: 520-512-8183 www.sastructural.com</p>	<p>LANDSCAPE ARCHITECT NORRIS DESIGN 418 N TOOLE AVE TUCSON, AZ 85701 CONTACT: JASON KUKLINKSKI PHONE: 520-622-9565 EMAIL: jkuklinkski@norris-design.com</p>
<p>MAYOR KATE GALLEGO</p> <p>CITY MANAGER JEFF BARTON</p>	<p>CITY COUNCIL</p> <p>DISTRICT NO. 1 ANN O'BRIEN DISTRICT NO. 2 JIM WARING DISTRICT NO. 3 DEBRA STARK DISTRICT NO. 4 LAURA PASTOR DISTRICT NO. 5 BETTY GUARDADO DISTRICT NO. 6 KEVIN ROBINSON DISTRICT NO. 7 CARLOS GALINDO-ELVIRA DISTRICT NO. 8 KESHA HODGE WASHINGTON</p>		



SHEET INDEX

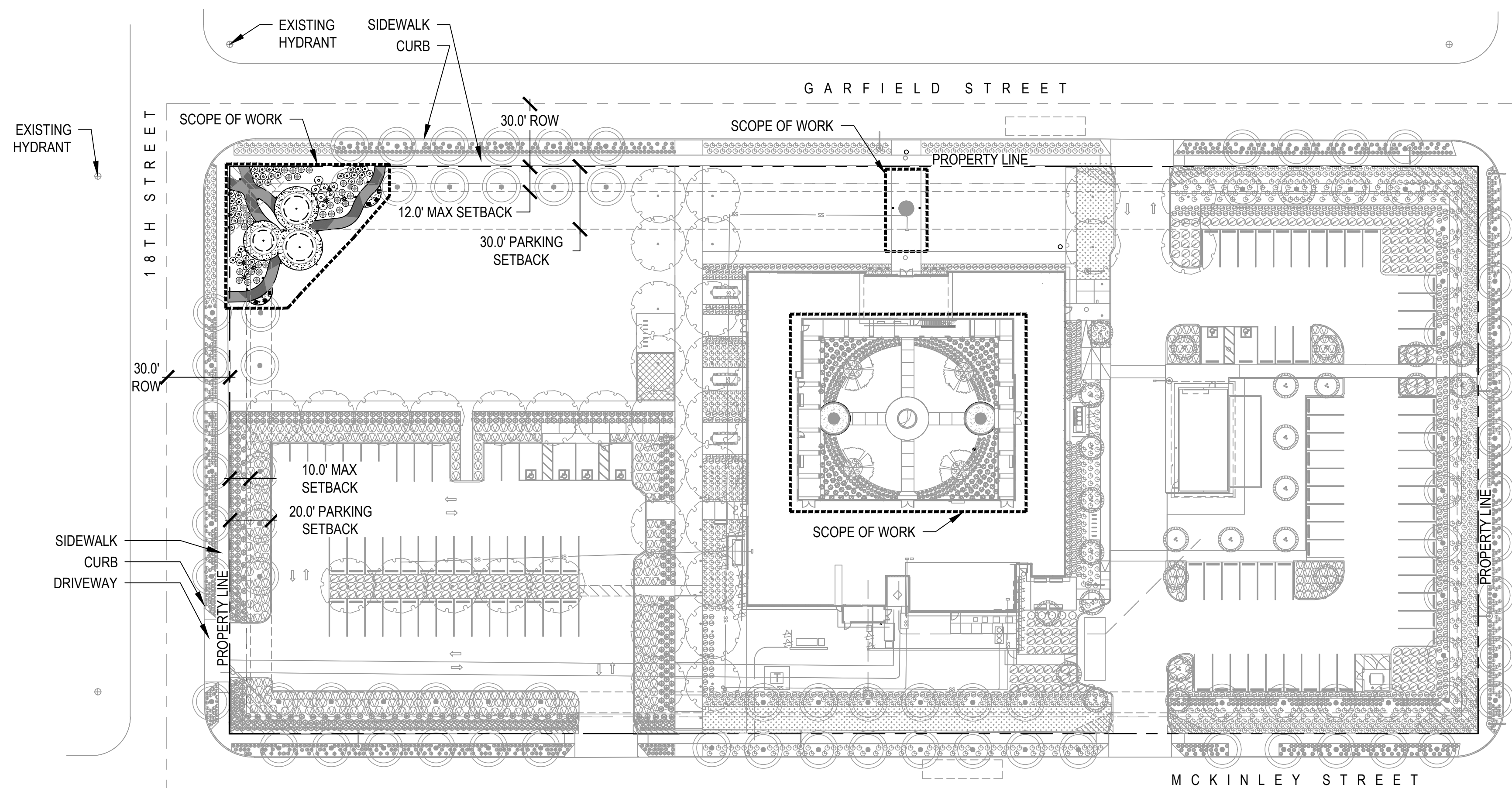
SHEET #	DESCRIPTION	(04/06/2023) ISSUED FOR: CLIENT REVIEW	(06/27/2023) ISSUED FOR: CLIENT REVIEW	(12/01/2023) ISSUED FOR: CLIENT REVIEW	(07/23/2024) ISSUED FOR: PERMIT REVIEW
L-100	LANDSCAPE COVER	X	X	X	X
L-101	HARDSCAPE PLAN	X	X	X	X
L-201	LAYOUT PLAN	X	X	X	X
L-301	LANDSCAPE PLAN			X	X
L-401	CONSTRUCTION DETAILS	X	X	X	X
L-402	CONSTRUCTION DETAILS	X	X	X	X

GENERAL LANDSCAPE NOTES (NOT REVIEWED OR APPROVED BY THE CITY OF PHOENIX)

- THE CONTRACTOR SHALL FOLLOW THE LANDSCAPE PLAN AS CLOSELY AS POSSIBLE. ANY DISCREPANCY IN THE PLAN VERSUS THE FIELD CONDITIONS SHALL BE REPORTED TO THE CITY REPRESENTATIVE IMMEDIATELY.
- LOCATION OF ALL ELEMENTS ON THIS PLAN SHALL BE APPROVED BY THE OWNER'S REPRESENTATIVE PRIOR TO INSTALLATION.
- MAINTENANCE: ALL LANDSCAPING AND IRRIGATION SYSTEMS SHALL BE MAINTAINED TO ACHIEVE PERMANENT, SAFE, AND SUCCESSFUL LANDSCAPING.
- ALL DISTURBED, GRUBBED, GRADED, OR BLADED AREAS NOT OTHERWISE IMPROVED SHALL BE LANDSCAPED OR TREATED WITH AN INORGANIC GROUNDCOVER.
- THE SCHEDULE FOR PLANTING OF SHRUBS SHALL BE AT THE DISCRETION OF THE CONTRACTOR. PLANTING DURING EXTREMELY COLD, HOT, OR WINDY PERIODS SHALL BE PERFORMED AT THE CONTRACTOR'S RISK. PLANTS WHICH ARE DAMAGED OR DIE PRIOR TO FINAL ACCEPTANCE AS A RESULT OF EXTREME WEATHER CONDITIONS SHALL BE REMOVED AND REPLACED BY THE CONTRACTOR AT NO ADDITIONAL COST TO THE OWNER.
- PLANT SIZE, LOCATION, AND SPACING:
 - SHRUBS ARE TO BE LOCATED SO THAT, AT MATURITY, THEY DO NOT INTERFERE WITH EXISTING ONSITE OR OFFSITE UTILITY SERVICE LINES OR UTILITY EASEMENTS OR WITH SOLAR ACCESS TO AN ADJACENT PROPERTY.
 - ALL SHRUBS AND GROUNDCOVERS TO BE A MINIMUM OF 2' FROM BACK OF CURB OR BACK OF SIDEWALK.
- PLANT PLACEMENT TO BE FIELD ADJUSTED AS NEEDED TO AVOID PROPOSED UTILITIES AND OTHER FIELD CONDITIONS. CONTACT THE OWNER'S REPRESENTATIVE FOR RELOCATION OF PLANTS IN QUESTIONABLE AREAS.
- ALL WORK SHALL BE CONFINED TO THE AREA WITHIN THE CONSTRUCTION LIMITS AS SHOWN ON THE PLANS. ANY AREAS OR IMPROVEMENTS DISTURBED OUTSIDE THESE

- LIMITS SHALL BE REVEGETATED OR REPAVED TO THEIR ORIGINAL CONDITION AT THE CONTRACTOR'S EXPENSE. IN THE EVENT THE CONTRACTOR REQUIRES A MODIFICATION TO THE CONSTRUCTION LIMITS, WRITTEN PERMISSION MUST BE OBTAINED FROM THE OWNER'S REPRESENTATIVE PRIOR TO ANY DISTURBANCE OUTSIDE OF THE LIMITS OF WORK.
- THE CONTRACTOR SHALL WARRANTY VEGETATION FOR NINETY (90) DAYS. THE CONTRACTOR SHALL WARRANTY THE IRRIGATION SYSTEM AND WORKMANSHIP FOR A MINIMUM PERIOD OF ONE YEAR.
- IN THE EVENT OF ANY DISPUTE BETWEEN THESE PLANS AND THE STANDARD SPECIFICATION, THE STANDARD SPECIFICATION SHALL PREVAIL.
- THE CONTRACTOR IS RESPONSIBLE FOR VERIFYING ALL PLANT QUANTITIES.
- IT IS THE OWNERS RESPONSIBILITY TO KEEP THE SIGHT VISIBILITY TRIANGLES (SVT) AND THE PEDESTRIAN ACCESS AREA CLEAR. (MUST PROVIDE A WINDOW OF VISIBILITY FROM 30" TO 72" ABOVE GRADE).
- FINAL PLANT LOCATIONS MUST BE IN COMPLIANCE WITH ALL UTILITY SETBACK REQUIREMENTS.
- CONTRACTOR TO VERIFY POSITIVE DRAINAGE TO ALL SURFACE, SUBSURFACE, AND PLANTER DRAINS.
- THERE ARE NO FIRELINE BACKFLOW PREVENTERS ON THIS PROJECT.

SITE LAYOUT (BY OTHERS, UNDER SEPARATE PERMIT)

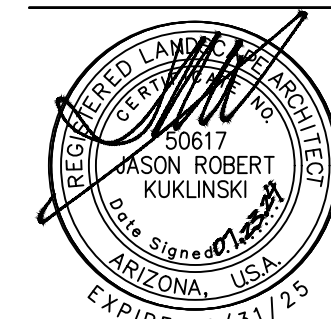


NOTE:

THERE IS AN EXISTING PERMITTED PROJECT UNDER THE TITLE, 'EDISON IMPACT HUB', FOR THE ENTIRE CAMPUS AND IS REFERENCED ABOVE. THE ADDITIONS AS A PART OF THIS PROJECT SCOPE WILL BE INCORPORATED INTO THE OVERALL PROJECT, ALTHOUGH BOTH ARE BEING PERMITTED SEPARATELY.

THIS CONSTRUCTION DOCUMENT PACKAGE IS FOR PROPOSED CONSTRUCTION OF PEDESTRIAN PAVING, DECOMPOSED GRANITE, AND LANDSCAPE PLANTING ON THE NORTHWEST CORNER OF 18TH STREET AND GARFIELD STREET. ADDITIONALLY, HARDSCAPE DETAILS HAVE BEEN INCLUDED FOR THE MODIFICATION OF HARDSCAPE PAVING TO BE INSTALLED WITHIN THE COURTYARD OF THE EXISTING BUILDING, AND AT THE EXISTING PEDESTRIAN PAVING AT THE NORTHERN ENTRANCE. ART ELEMENTS PROVIDED BY ARTIST INCLUDE PARASOL STRUCTURES AND FOOTER, ALL MOSAIC TILE, ALL CONCRETE WORK / PATHS AT NW ART PLAZA, AND SEATING.

*PER CITY OF PHOENIX CITY CODE CHAPTER 2, SECTION 2-28, THESE PLANS ARE FOR OFFICIAL USE ONLY AND MAY NOT BE SHARED WITH OTHERS EXCEPT AS REQUIRED TO FULFILL THE OBLIGATIONS OF THE CONTRACTOR'S CONTRACT WITH THE CITY OF PHOENIX.



_____ CITY ENGINEER	_____ DATE
_____ WATER SERVICES DEPARTMENT	_____ DATE
_____ MARICOPA COUNTY ENVIRONMENTAL SERVICES DEPARTMENT WWR-20-00327	_____ DATE

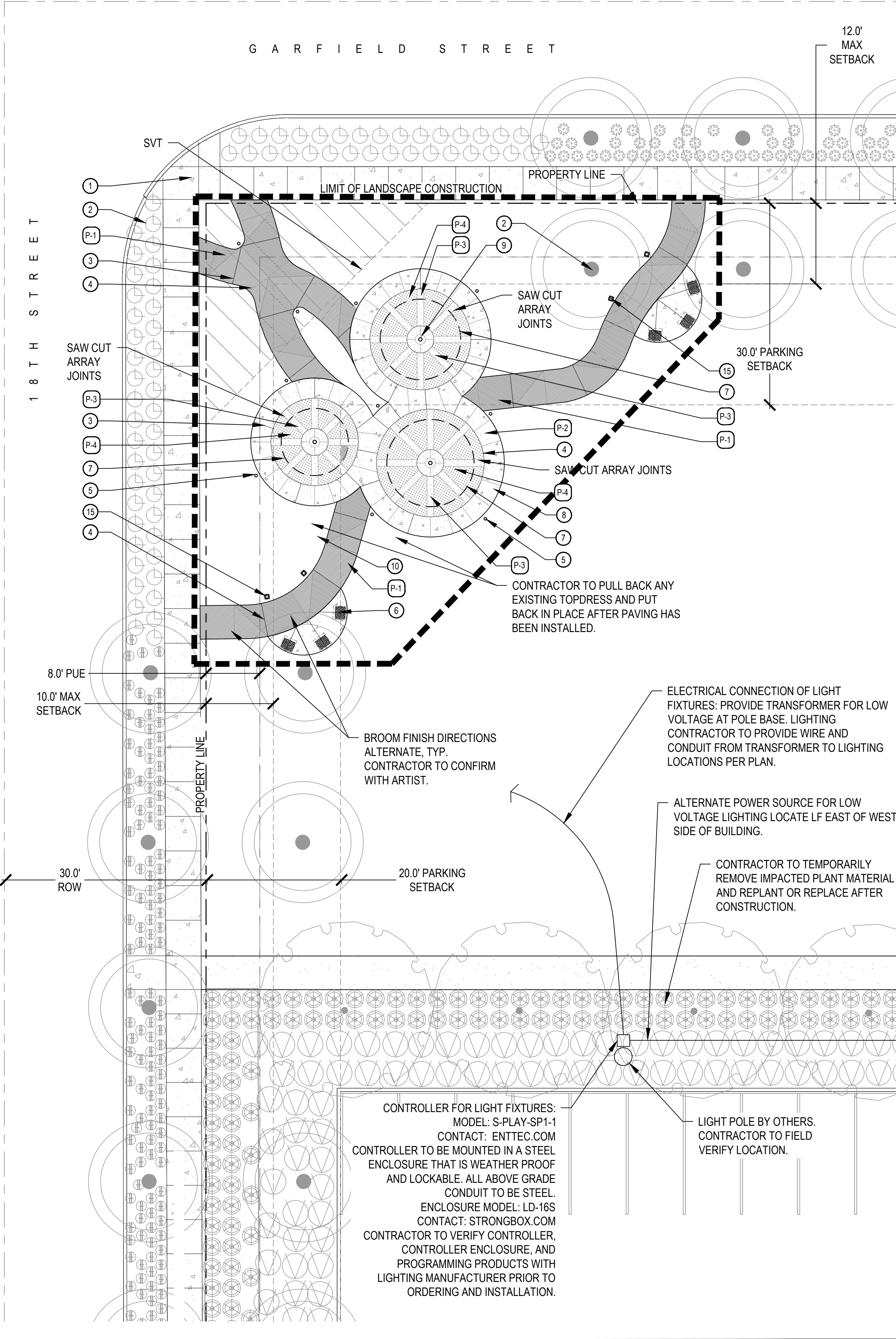
KEY NOTES

- 1 EXISTING PAVING, OUT OF SCOPE
- 2 PROPOSED LANDSCAPE BY OTHERS, OUT OF SCOPE. ALL TREES EXISTING DURING THE TIME OF CONSTRUCTION TO BE PROTECTED IN PLACE
- 3 SCORE JOINT TYP. - SEE DETAIL 1/LA-401
- 4 EXPANSION JOINT TYP. - SEE DETAIL 1/LA-401
- 5 PATHWAY LIGHT BOLLARD, TYPICAL. QTY: 10 SEE DETAIL 7/LA-401
- 6 CONCRETE BENCH SEAT
MANUFACTURER: QCP
MODEL: ORION SMALL; Q2-ORION-SM
COLOR: LATTE
FINISH: SANDSTONE, WITH ANTI-GRAFFITI COATING
CONTACT: QCP-CORP.COM
SEE DETAIL 5/LA-401
- 7 PARASOL ART STRUCTURE - INSTALLED BY OTHERS. SEE REFERENCE DETAIL 4/LA-401
- 8 PEDESTRIAN PAVING. SEE PAVING SCHEDULE
- 9 PAVING AT PARASOL INSTALLATIONS. COORDINATE WITH PARASOL STRUCTURE CONTRACTOR AND ARTIST PRIOR TO LAYOUT AND INSTALLATION F PAVING
- 10 LANDSCAPE AREA WITH DECOMPOSED GRANITE AND PLANT MATERIAL
- 11 MORTARED BRICK EDGER. INSTALL PER DETAIL 3/LA-401
- 12 'SELFIE CIRCLE' ARTWORK. SEE DETAIL ON SHEET 2/LA-401. ART TILE TO BE INSTALLED BY OTHERS
- 13 REMOVE EXISTING CONCRETE WALK TO CLOSEST CONTROL JOINT. INSTALL NEW CONCRETE TO MATCH EXISTING WALK. PROVIDE EXPANSION JOINT AT BRICK
- 14 PROPOSED LANDSCAPE BY OTHERS AND CONCRETE CURB TO BE ADJUSTED PER NEWLY PROPOSED PEDESTRIAN PAVING
- 15 RGBW LIGHT COLUMN BOLLARD, TYPICAL. QTY: 4 SEE DETAIL 8/LA-401
- 16 RADIA LIGHT BOLLARD, TYPICAL. QTY: 2 SEE DETAIL 6/LA-401. THESE TWO LIGHT BOLLARDS ARE A CHANGE IN PRODUCT ONLY, AND HAVE ELECTRICAL CONNECTIONS PROVIDED BY OTHERS. CONTRACTOR TO COORDINATE LOCATION OF ELECTRICAL CONNECTION PRIOR TO INSTALLATION

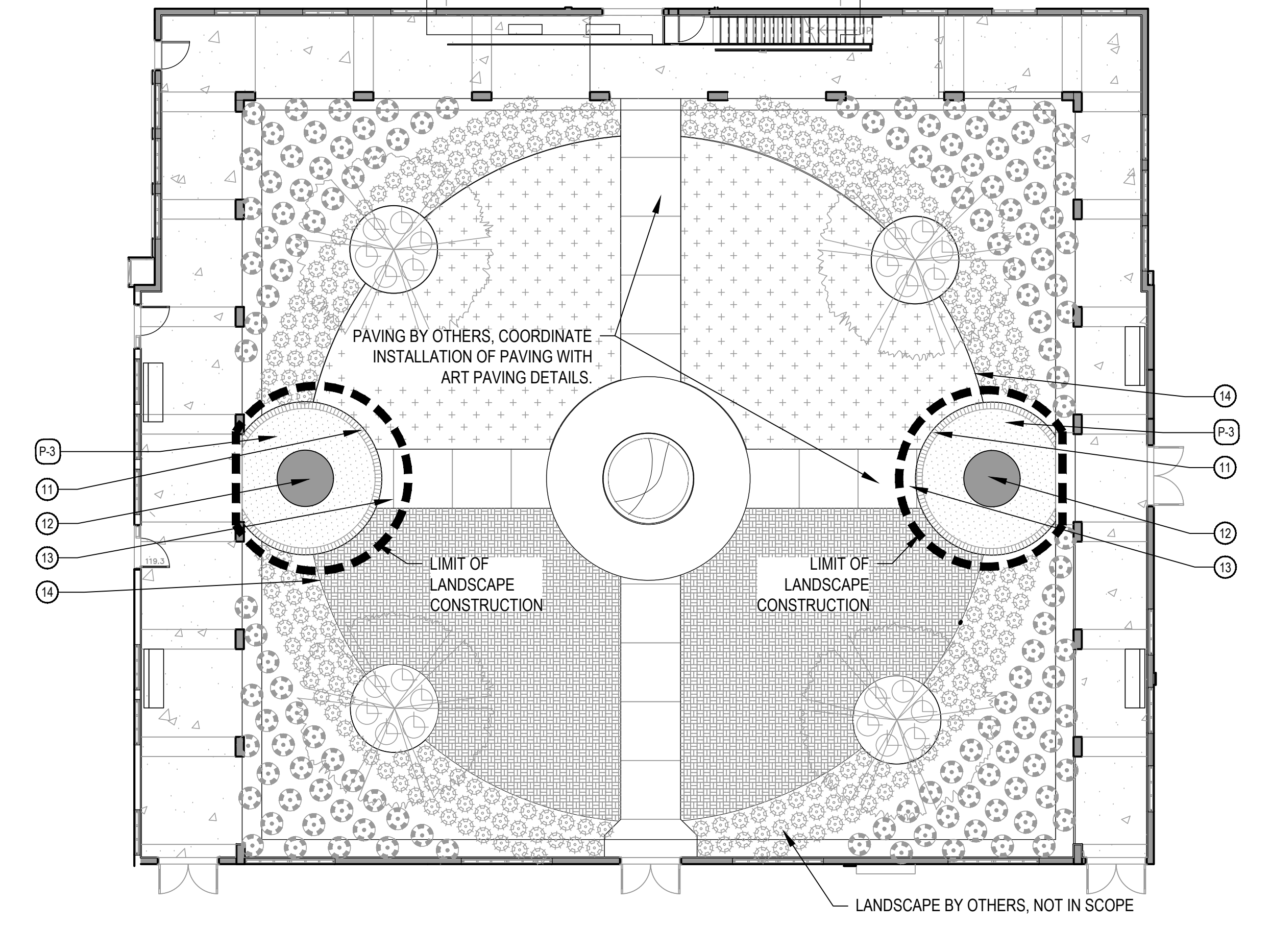
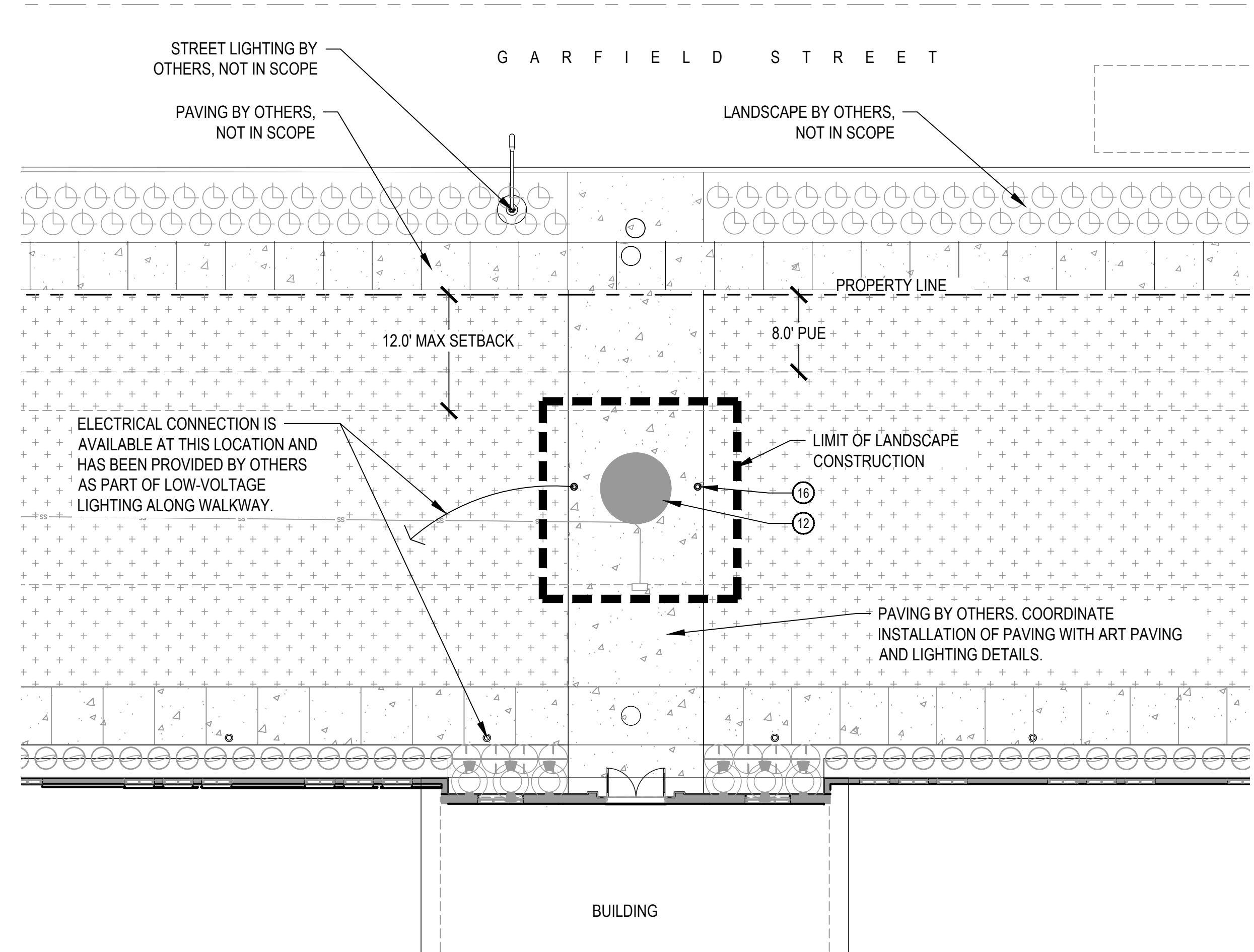
PAVING & TOPDRESS SCHEDULE

- | | | |
|-----|--|--|
| P-1 | | TYPE 1 - CONCRETE
FINISH: HEAVY BROOM
COLOR: NATURAL GRAY
TYPE: PEDESTRIAN RATED
SEE DETAIL 4/LA-201 |
| P-2 | | TYPE 2 - CONCRETE
FINISH: LIGHT BROOM
COLOR: DAVIS COLOR #860 DARK GRAY
TYPE: PEDESTRIAN RATED
SEE DETAIL 4/LA-201 |
| P-3 | | TYPE 3 - CONCRETE
FINISH: LIGHT BROOM
COLOR: NATURAL GRAY
TYPE: PEDESTRIAN / OUTDOOR RATED
SEE DETAIL 4/LA-201 |
| P-4 | | TYPE 4 - CONCRETE
FINISH: MEDIUM SANDBLAST
COLOR: NATURAL GRAY
TYPE: PEDESTRIAN RATED
SEE DETAIL 4/LA-201 |

- NOTES:**
1. CONTRACTOR TO PROVIDE 5'X5' MOCKUP OF ALL PAVING MATERIALS AND FINISHES FOR REVIEW AND APPROVAL BY OWNER AND LANDSCAPE ARCHITECT PRIOR TO CONSTRUCTION.
 2. PRESERVE AND PROTECT EXISTING TREES ON SITE. IN CASE OF EXISTING TREES IN LIMIT OF WORK, PROTECT TRUNK AND AVOID WHILE WORKING.

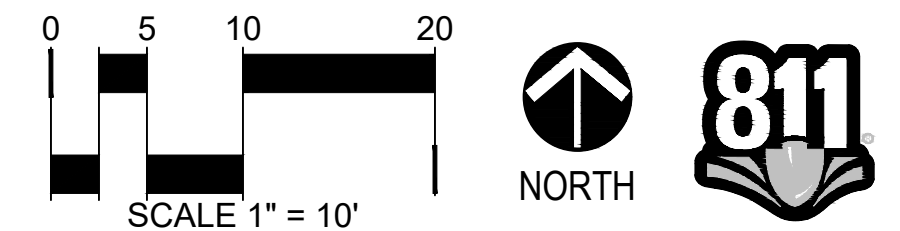


PARASOL STRUCTURES PLAZA AT NW CORNER OF PROPERTY



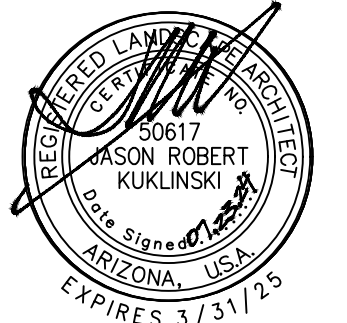
'SELFIE-CIRCLES' AT BUILDING ENTRANCE AND INTERIOR COURTYARD

*PER CITY OF PHOENIX CITY CODE CHAPTER 2, SECTION 2-28, THESE PLANS ARE FOR OFFICIAL USE ONLY AND MAY NOT BE SHARED WITH OTHERS EXCEPT AS REQUIRED TO FULFILL THE OBLIGATIONS OF THE CONTRACTOR'S CONTRACT WITH THE CITY OF PHOENIX.



OWNER:
CITY OF PHOENIX
HOUSING DEPARTMENT
251 W WASHINGTON ST
4TH FLOOR
PHOENIX, AZ 85003
602.256.3338
www.phoenix.gov

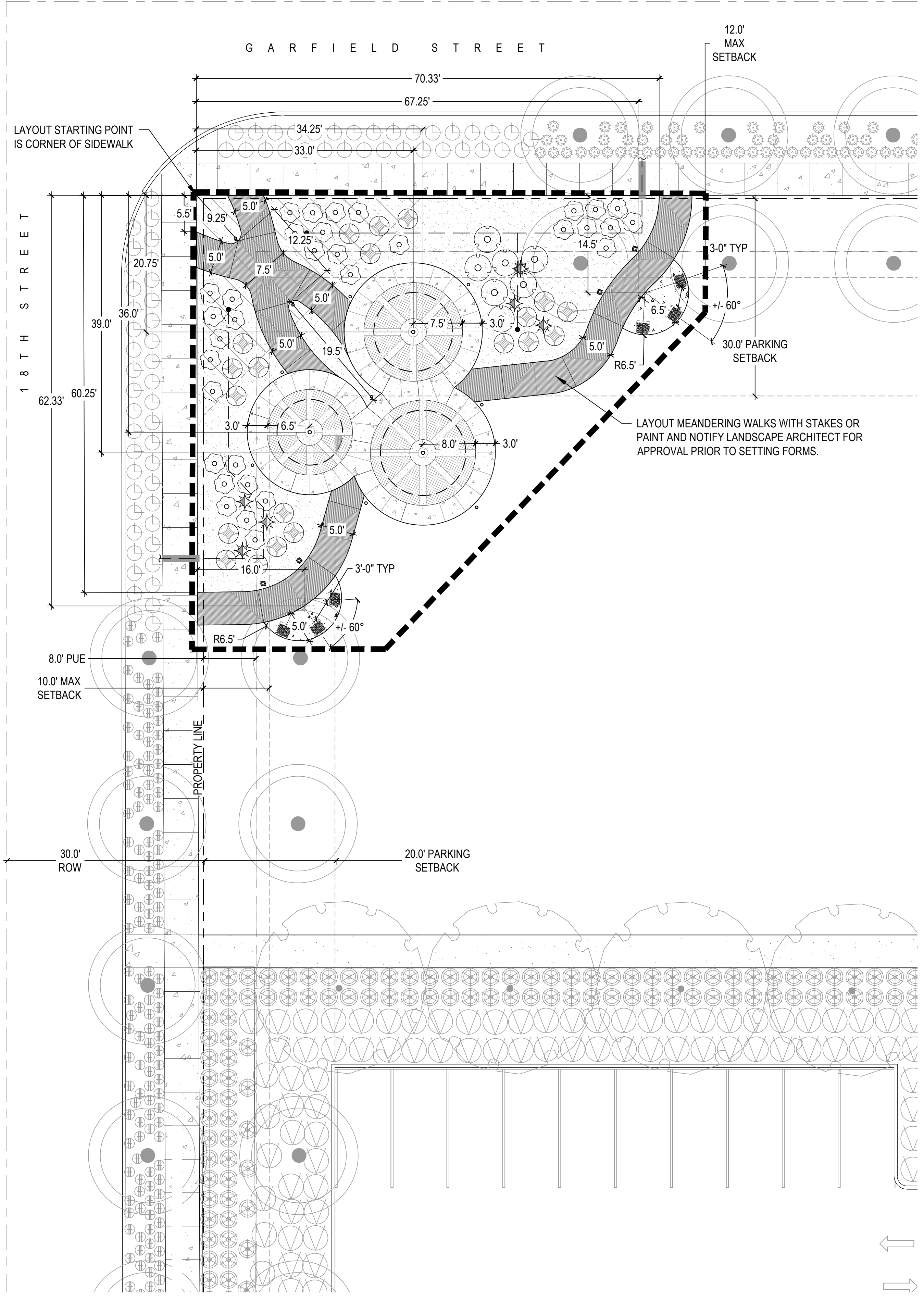
PROJECT NUMBER:
AH20300003-2



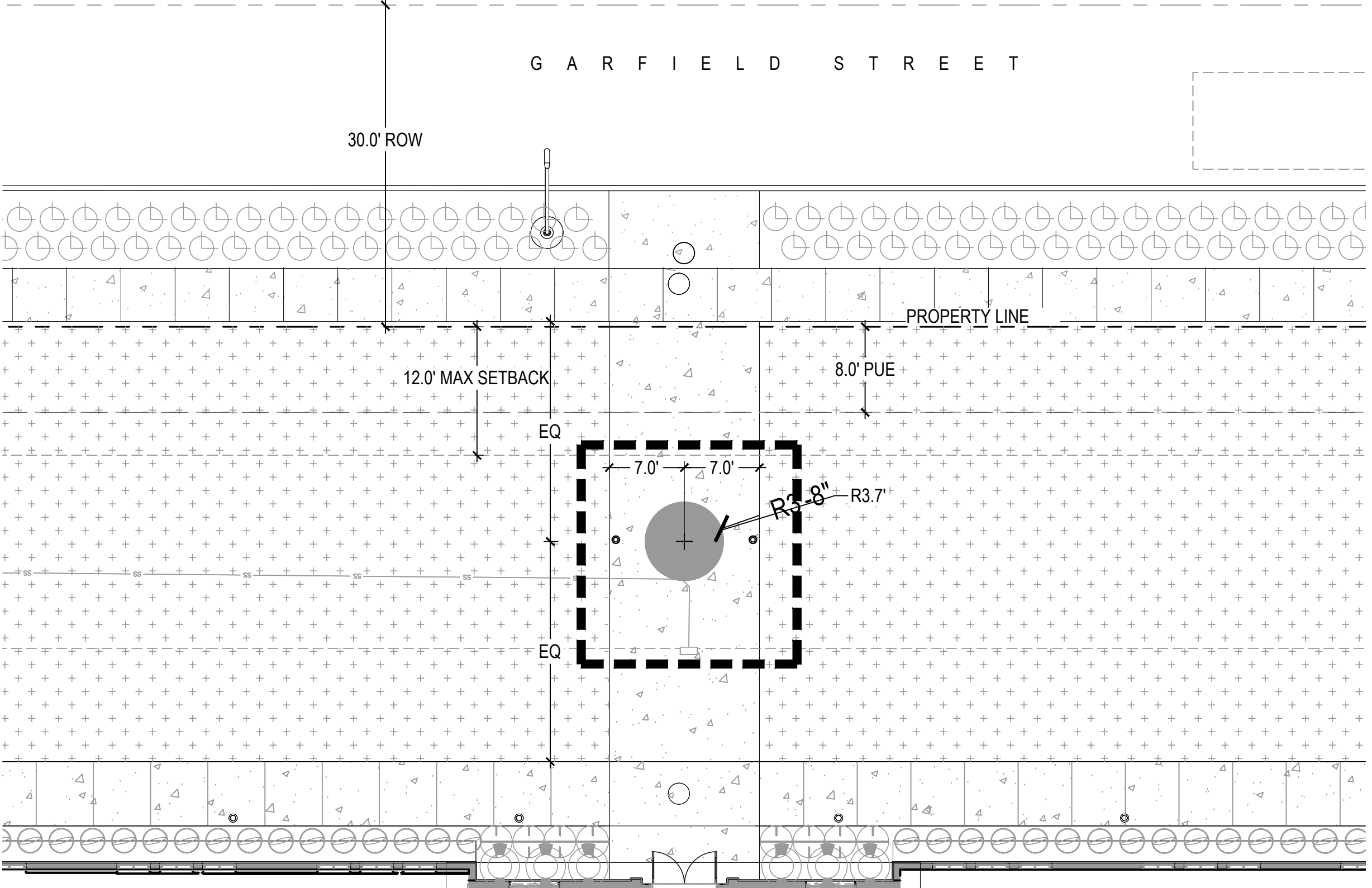
DATE:
07.23.2024
PERMIT REVIEW

SHEET TITLE:
LAYOUT PLAN

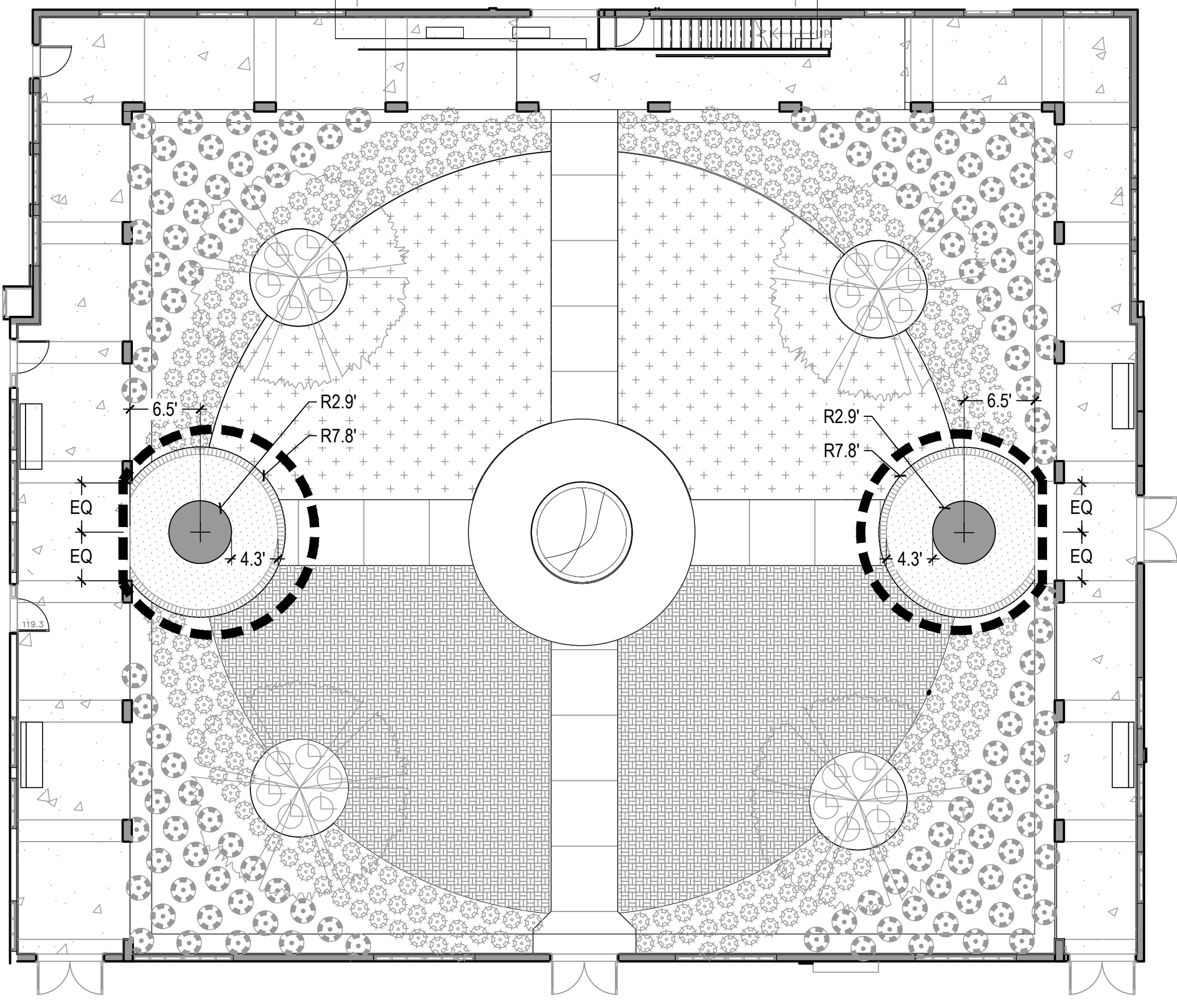
L-201
3 OF 6



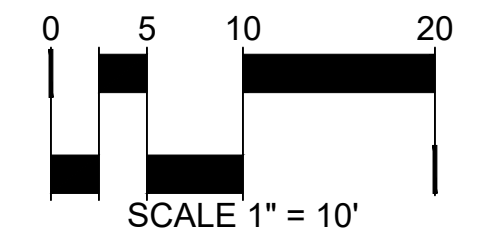
PARASOL STRUCTURES PLAZA AT NW CORNER OF PROPERTY



'SELFIE-CIRCLES' AT BUILDING ENTRANCE AND INTERIOR COURTYARD



*PER CITY OF PHOENIX CITY CODE CHAPTER 2, SECTION 2-28, THESE PLANS ARE FOR OFFICIAL USE ONLY AND MAY NOT BE SHARED WITH OTHERS EXCEPT AS REQUIRED TO FULFILL THE OBLIGATIONS OF THE CONTRACTOR'S CONTRACT WITH THE CITY OF PHOENIX.



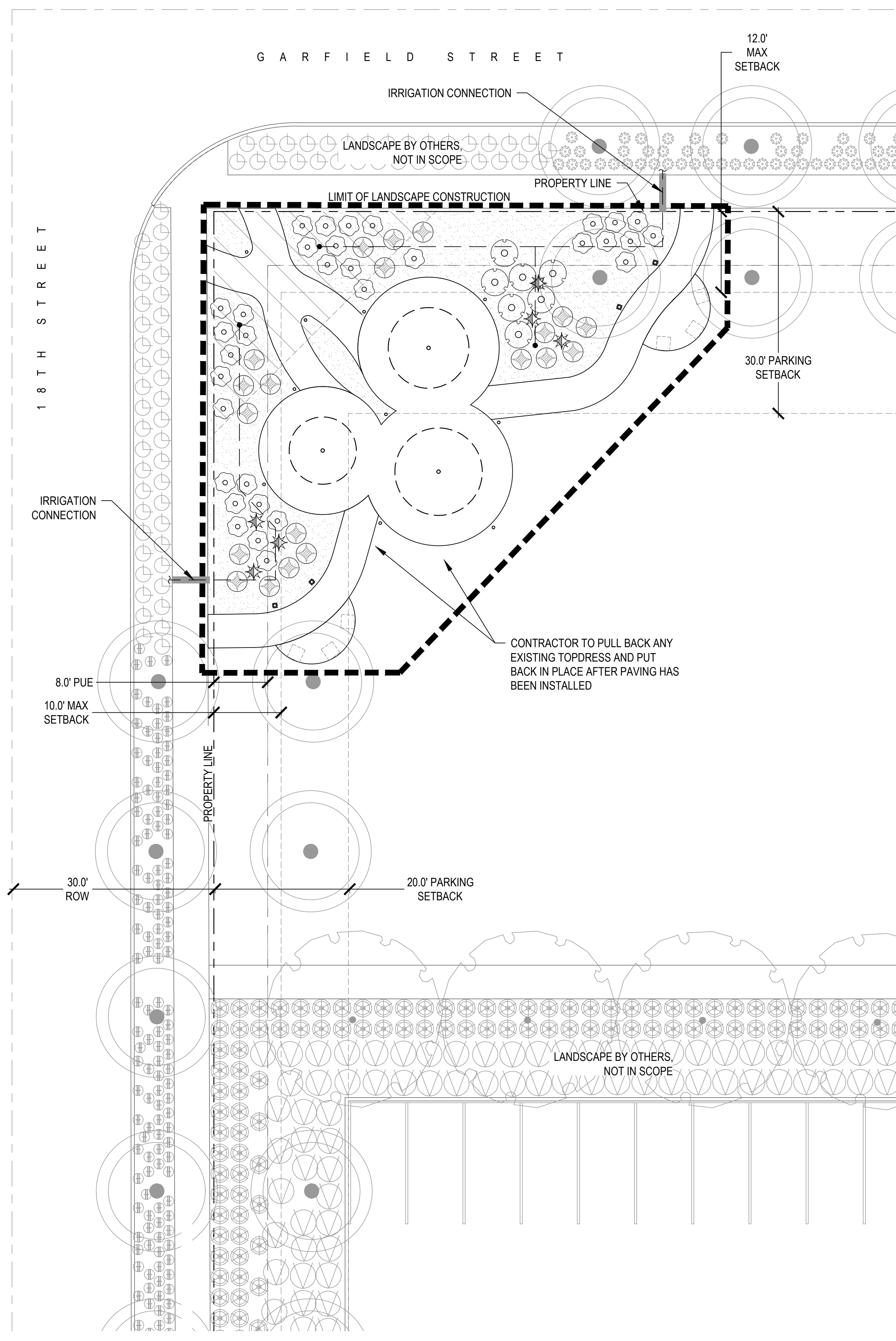
CHECKED BY: JK
DRAWN BY: SS

AH20300003-2 EDISON IMPACT HUB, QS: 11-31

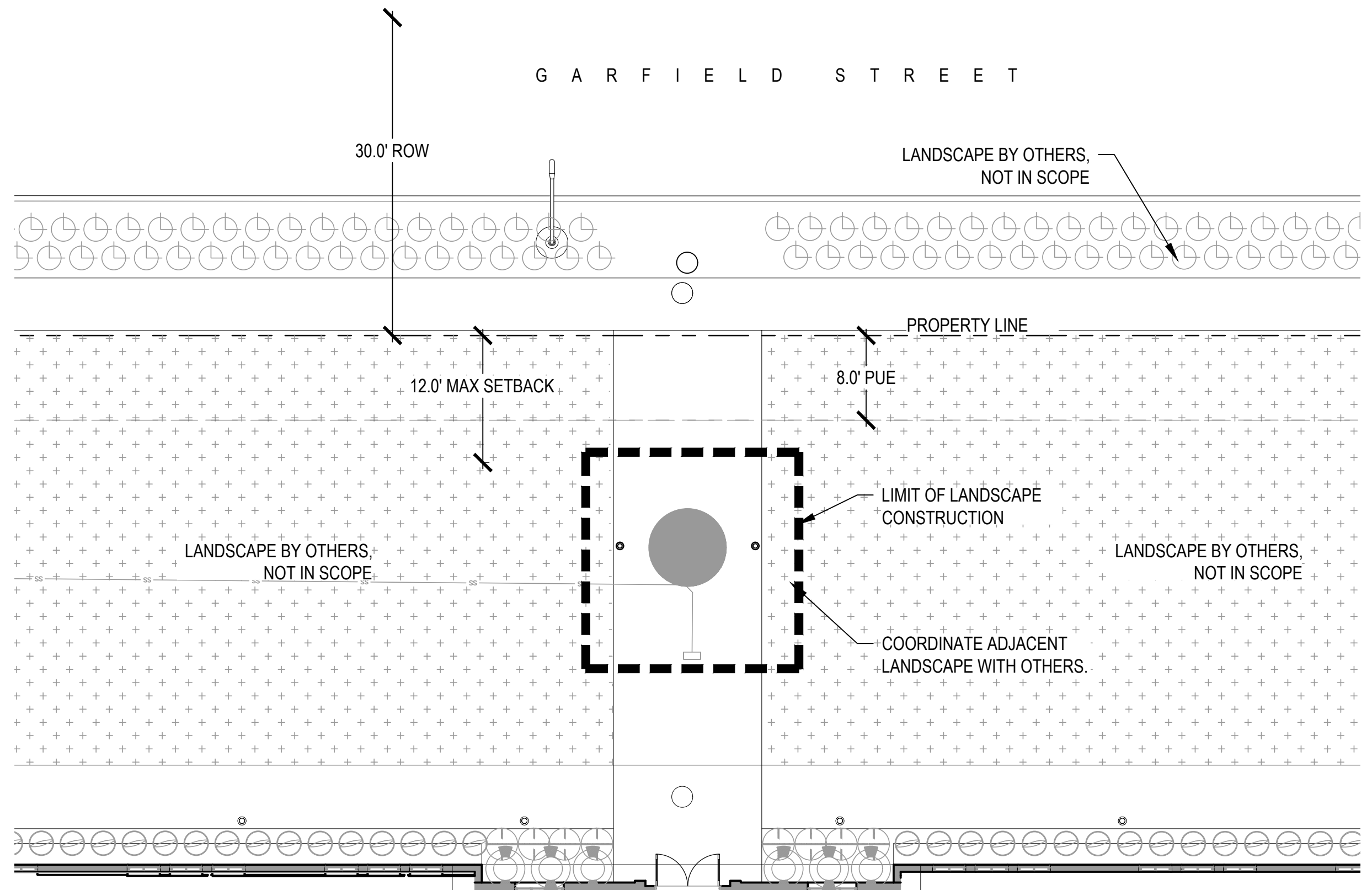
PLANT SCHEDULE			
SHRUBS	BOTANICAL/COMMON NAME	SIZE	QTY
	Dalea capitata Dalea	Existing	33
	Verbena rigida Sandpaper Verbena	Existing	7
GROUNDCOVER	BOTANICAL/COMMON NAME	SIZE	QTY
	Lantana montevidensis Purple Trailing Lantana	1 gal	20
SUCCULENTS	BOTANICAL/COMMON NAME	SIZE	QTY
	Agave parryi v. 'Truncata' Artichoke Agave	5 gal	6

TOPDRESS SCHEDULE	
	TYPE 1 - DECOMPOSED GRANITE MANUFACTURED BY: ROCK PROS USA COLOR: FROST TYPE: 1/2" SCREENED SEE DETAIL 9/LA-401

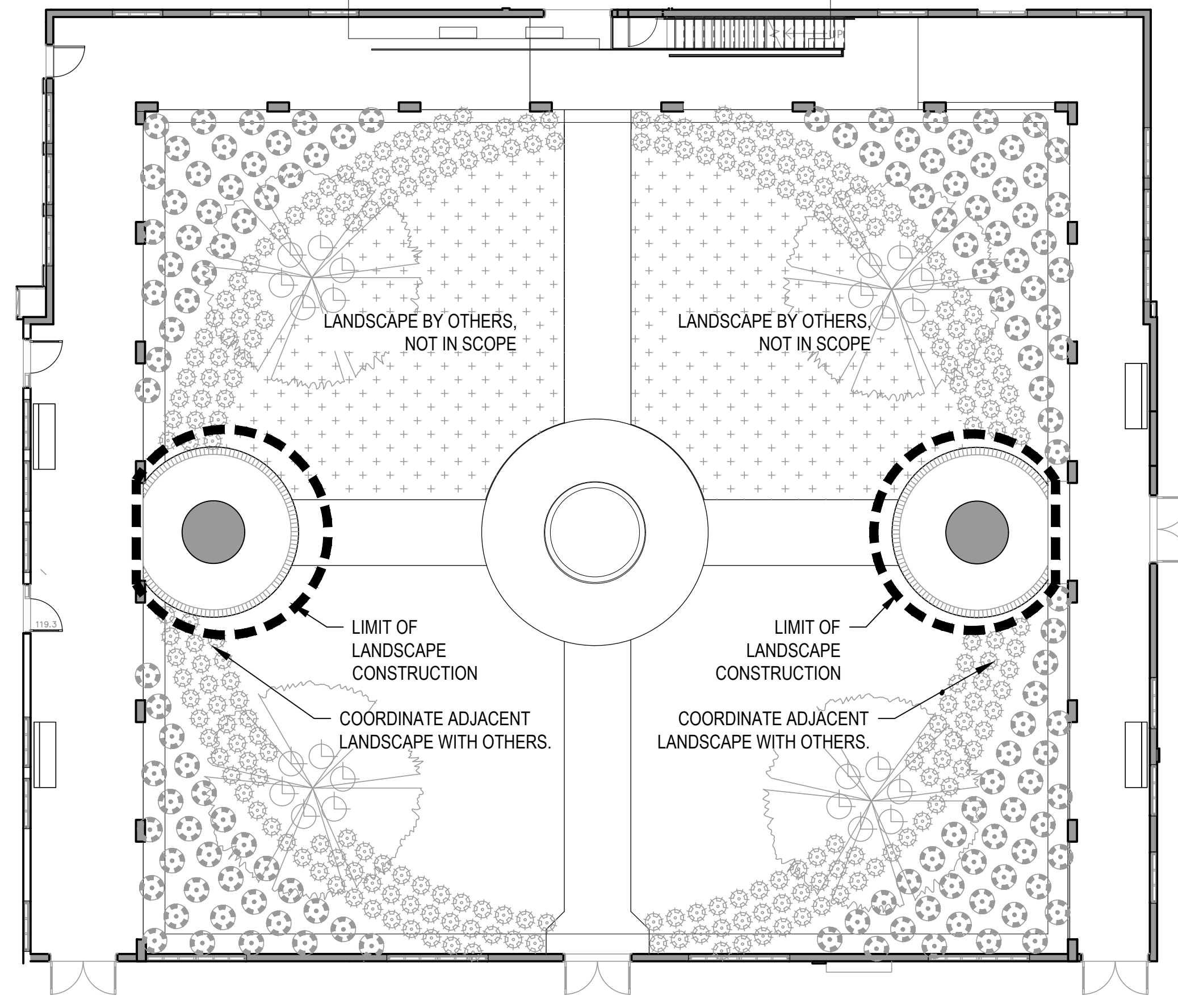
- NOTES:
- PRESERVE AND PROTECT EXISTING TREES ON SITE. IN CASE OF EXISTING TREES IN LIMIT OF WORK, PROTECT TRUNK AND AVOID WHILE WORKING.
- IRRIGATION NOTES:
- CONTRACTOR TO LOCATE IRRIGATION SHRUB LATERAL AND EXTEND UNDER WALK. PROVIDE SLEEVE UNDER WALK AS NEEDED.
 - EXTEND LATERAL AS SHOWN.
 - PROVIDE EMITTERS TO PROPOSED PLANTINGS PER IRRIGATION REQUIREMENTS OF MAIN IMPACT HUB PROJECT PLANS.



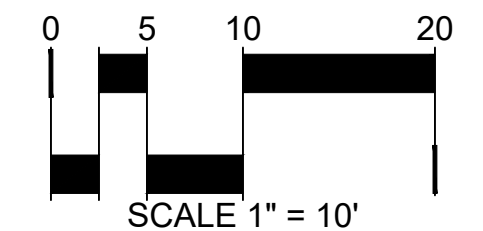
PARASOL STRUCTURES PLAZA AT NW CORNER OF PROPERTY

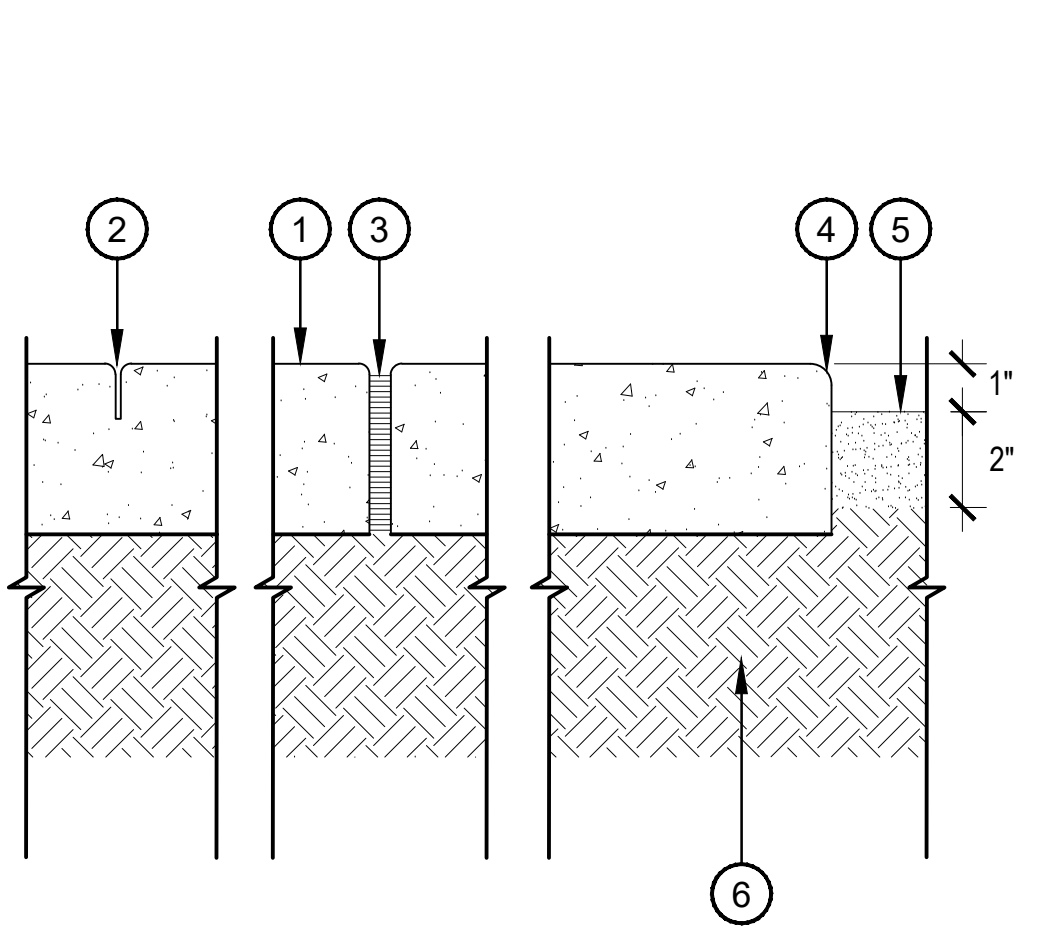
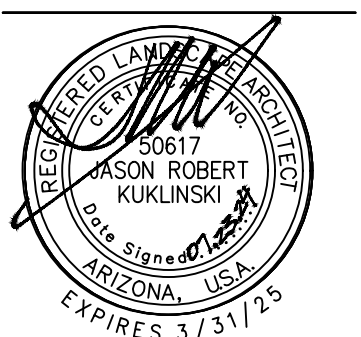


'SELFIE-CIRCLES' AT BUILDING ENTRANCE AND INTERIOR COURTYARD (NO LANDSCAPE IMPROVEMENTS / ADDITIONS)



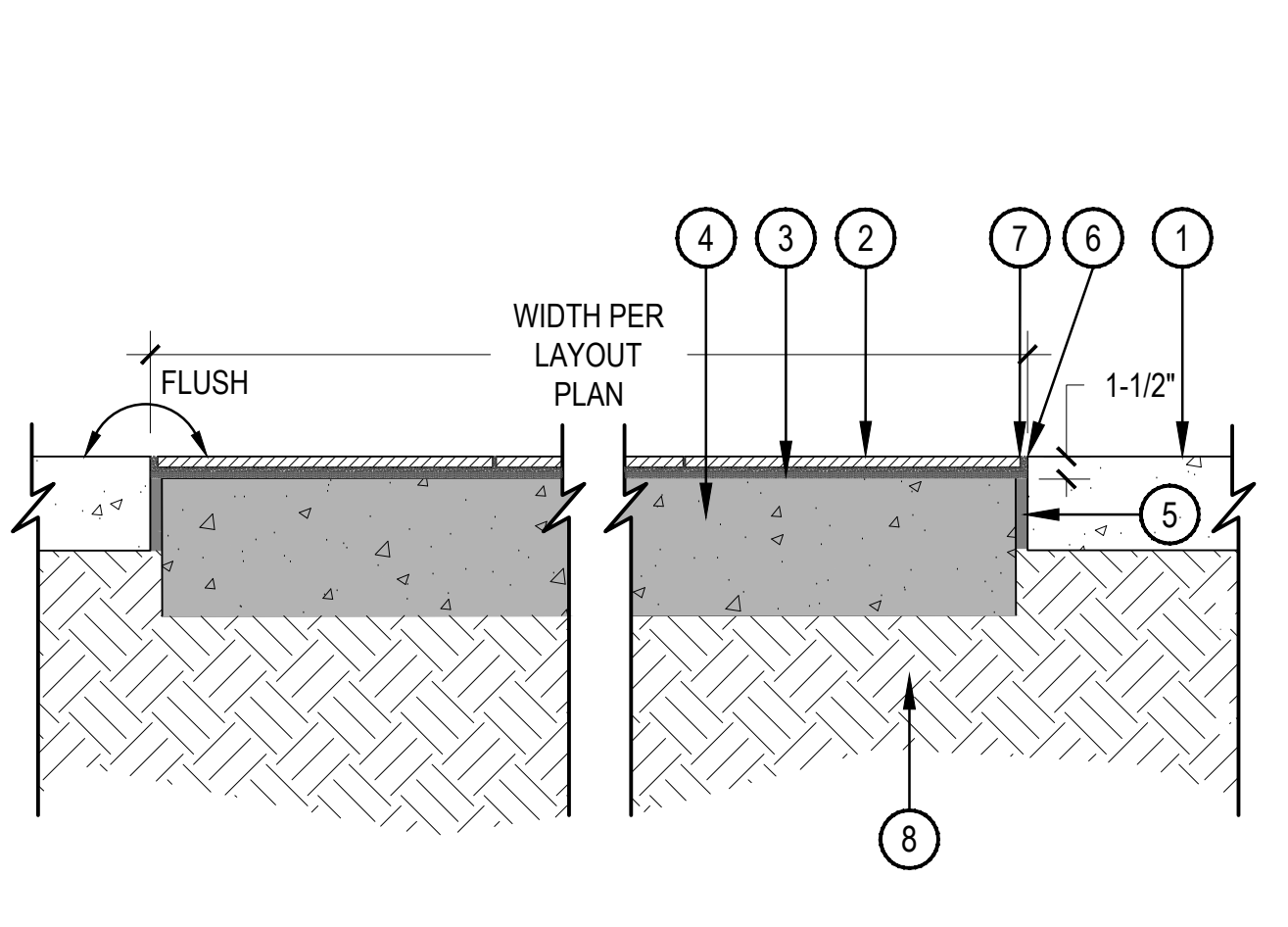
*PER CITY OF PHOENIX CITY CODE CHAPTER 2, SECTION 2-28, THESE PLANS ARE FOR OFFICIAL USE ONLY AND MAY NOT BE SHARED WITH OTHERS EXCEPT AS REQUIRED TO FULFILL THE OBLIGATIONS OF THE CONTRACTOR'S CONTRACT WITH THE CITY OF PHOENIX.





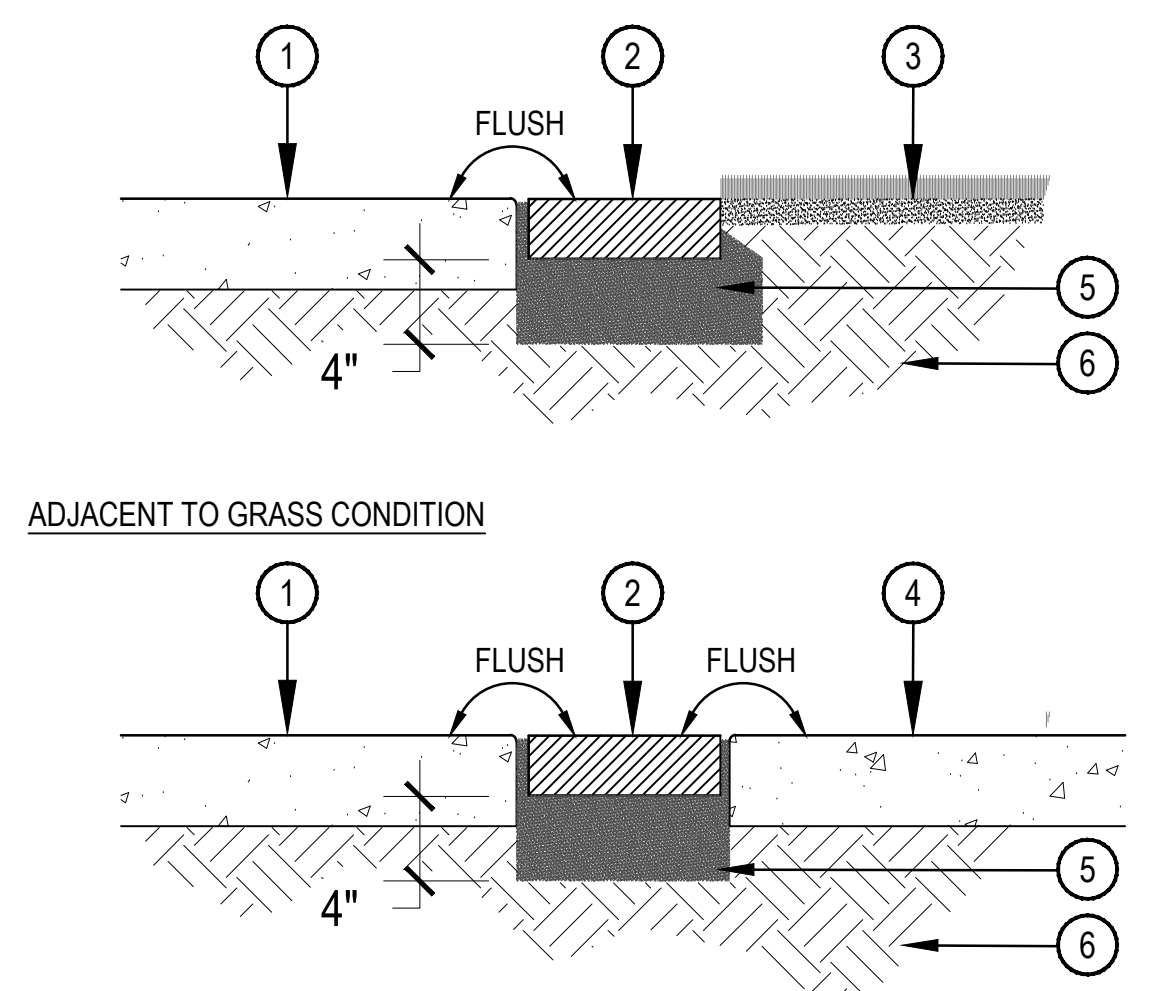
- 1 CONCRETE PAVING. COLOR: STANDARD GREY. 3,000 PSI - SEE PAVING SCHEDULE FOR LOCATIONS ON PLAN
- 2 TOOLED JOINT, 1/4" RADIUS SPACE EQUAL TO WIDTH OF WALK UNLESS NOTED OTHERWISE. DEPTH TO 1/3" CONCRETE THICKNESS MIN.
- 3 FIBER EXPANSION JOINT WITH TRAFFIC SEALANT
- 4 1/4" RADIUS TOOL EDGE
- 5 FINISHED GRADE OF TOPDRESS SEE LANDSCAPE PLAN. BACKFILL AFTER FORM REMOVAL
- 6 COMPACTED SUBGRADE PER GEOTECH RECOMMENDATIONS

NOTES:
1. C.I.P. CONCRETE PER PLANS AND SPECS. CONTROL JOINTS AS SHOWN ON PLANS WITH EXPANSION JOINTS AS SHOWN ON PLANS @ 24' O.C. MAX. OR WHERE NOTED.



- 1 ADJACENT 4" CONCRETE PAVING - SEE LAYOUT PLAN
- 2 ARTIST PROVIDED AND INSTALLED CUSTOM TILE PAVER AND GROUT. COORDINATE WITH OWNER'S REPRESENTATIVE PRIOR TO POURING BASE CONCRETE
- 3 LEVELING MORTAR LAYER PROVIDED BY ARTIST INSTALLATION FOR FINAL SURFACE PREPARATION
- 4 6" CONCRETE SLAB #5 FORTA FERR POLYPROPYLENE FIBER ADDITIVE. SET TOP OF SLAB TO 1-1/2" DOWN FROM FINISH GRADE OF ADJACENT PAVING.
- 5 EXPANSION JOINT
- 6 1/4" RADIUS
- 7 MAXIMUM 2" JOINT ON OUTSIDE EDGE OF TILE. VERIFY DIMENSIONS WITH ARTIST AND/OR LANDSCAPE ARCHITECT PRIOR TO CONCRETE INSTALLATION
- 8 COMPACTED SUBGRADE

NOTES:
1. INSTALL PER LAYOUT PLAN.
2. CONTRACTOR TO COORDINATE PAVING DIMENSIONS AND LAYOUT WITH ARTIST AND/OR LANDSCAPE ARCHITECT PRIOR TO INSTALLATION.
3. TOLERANCE ON DIAMETER OF CIRCLE IS +/- 1".
4. USE METAL FORMWORK TO MAINTAIN SMOOTH RADIUS AND FINISH EDGE ON SLAB.



- 1 CONCRETE PAVING - SEE DETAIL 1/LA-401
- 2 MORTARED BRICK EDGER - SEE LAYOUT PLAN
- 3 TURF - BY OTHERS
- 4 CONCRETE PAVING - SEE DETAIL 1/LA-401
- 5 REPLACE WALKWAY UP TO NEXT CONTROL OR EXPANSION JOINT - SEE LAYOUT PLAN
- 6 4" MORTAR BED. RAKE JOINTS FLUSH WITH TOP OF PAVERS
- 7 COMPACTED SUBGRADE

NOTES:
1. BRICK MORTAR JOINTS TO BE A MINIMUM 3/8" AND MAXIMUM 5/8" BETWEEN BRICK AND CONCRETE PAVING.
2. MAXIMUM JOINT WIDTH AT OUTSIDE EDGE TO BE 1".
3. EXTEND MORTAR BED APPROXIMATELY HALF WAY UP BRICK EDGER ON TURF-ADJACENT SIDE.

1 SCORE AND EXPANSION JOINT

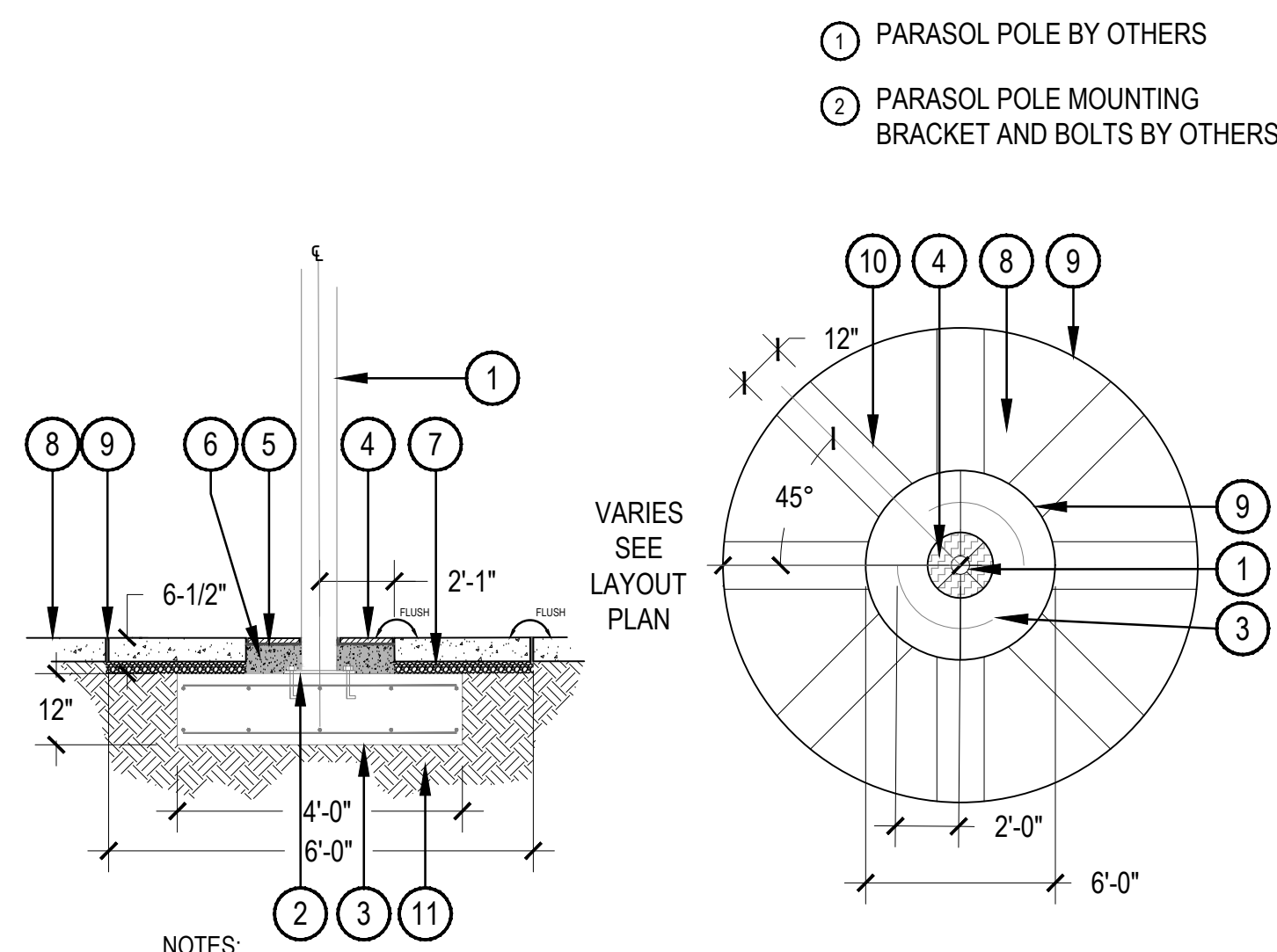
SCALE: 3" = 1'-0"

2 'SELFIE CIRCLE' ARTWORK

SCALE: 1 1/2" = 1'-0"

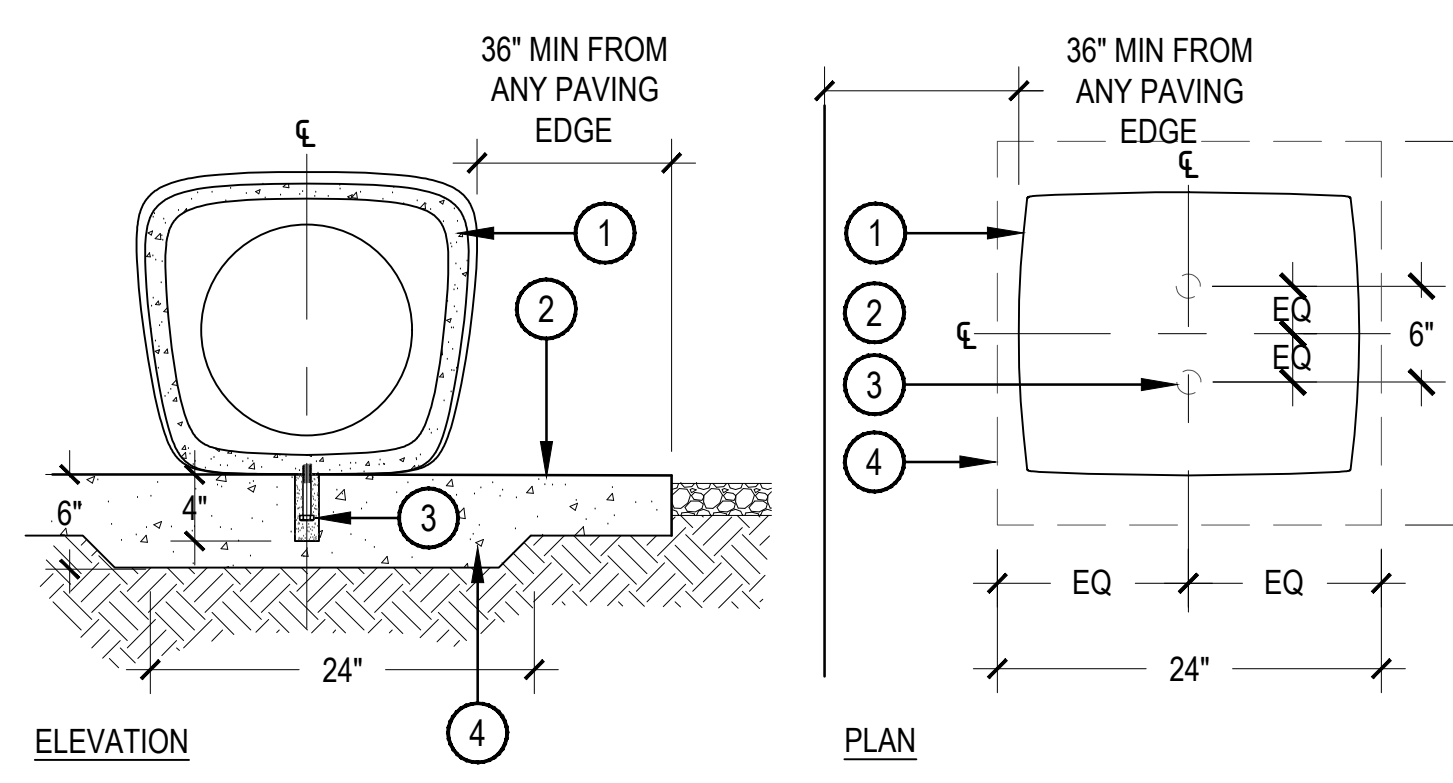
3 MORTARED BRICK EDGE

SCALE: 1 1/2" = 1'-0"



- 1 PARASOL POLE BY OTHERS
- 2 PARASOL POLE MOUNTING BRACKET AND BOLTS BY OTHERS
- 3 12"x48"Ø CONCRETE FOOTER FOR PARASOL BY OTHERS
- 4 ARTIST PROVIDED AND INSTALLED CUSTOM TILE PAVER AND GROUT. COORDINATE WITH OWNER'S REPRESENTATIVE PRIOR TO POURING ADJACENT CONCRETE
- 5 LEVELING MORTAR LAYER PROVIDED BY ARTIST INSTALLATION FOR FINAL SURFACE PREPARATION
- 6 6" CONCRETE SLAB #5 FORTA FERR POLYPROPYLENE FIBER ADDITIVE. SET TOP OF SLAB TO 1-1/2" DOWN FROM FINISH GRADE OF ADJACENT PAVING. THIS PORTION OF CONCRETE MUST BE POURED AFTER PARASOL POLES ARE INSTALLED.
- 7 COMPACTED AGGREGATE LEVELING COURSE OVER PARASOL FOOTER
- 8 CONCRETE FINISH. SEE PAVING SCHEDULE ON HARDSCAPE PLAN
- 9 EXPANSION JOINT COLOR MATCH TO CONCRETE
- 10 SCORE JOINT PATTERN. SEE LAYOUT PLAN
- 11 COMPACTED SUBGRADE

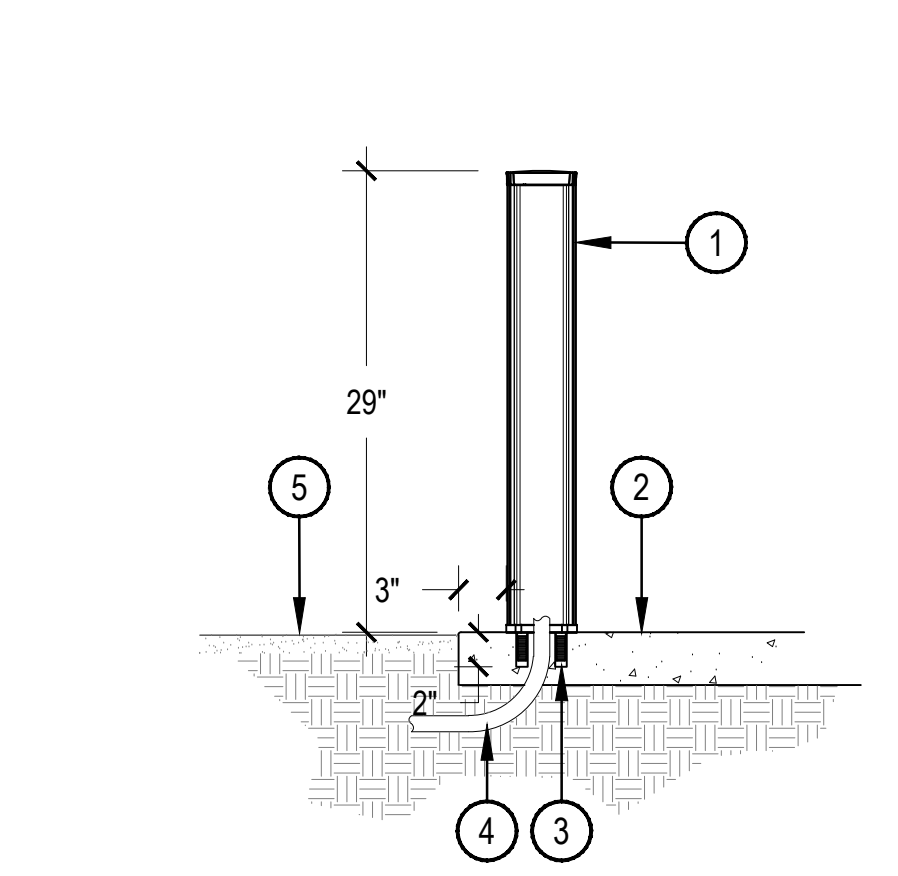
NOTES:
1. INSTALL PER STRUCTURAL ENGINEER'S INSTRUCTIONS.
2. CONTRACTOR TO COORDINATE PAVING DIMENSIONS AND SCORE JOINT LAYOUT WITH ARTIST AND/OR LANDSCAPE ARCHITECT PRIOR TO INSTALLATION.



- 1 CONCRETE BENCH SEAT
- 2 ADJACENT CONCRETE PAVING. SEE LAYOUT PLAN
- 3 4" DEPTH x 1-1/2" Ø ANCHOR HOLE. INSTALL 1/4"x3-1/2" STAINLESS STEEL MOUNTING BOLTS PER MANUFACTURER
- 4 24"x24"x6" THICKENED CONCRETE UNDER BENCH SEAT CENTERED ON ANCHORS - SEE LAYOUT PLAN

MANUFACTURER: QCP
MODEL: ORION SMALL; Q2-ORION-SM
COLOR: LATTE
FINISH: SANDSTONE WITH ANTI-GRAFFITI COATING
CONTACT: QCP-CORP.COM

NOTES:
1. CONTRACTOR TO OBTAIN AND SUBMIT PRODUCT SPECIFICATIONS TO ARTIST AND OWNER FOR APPROVAL PRIOR TO ORDER / INSTALLATION.
2. USE MANUFACTURER MOUNTING TEMPLATE FOR LAYOUT OF MOUNTING BOLTS.
3. VERIFY 3" MINIMUM CLEARANCE AT EACH SEAT PRIOR TO SETTING MOUNTING BOLTS. COORDINATE FINAL LOCATION WITH ARTIST AND/OR LANDSCAPE ARCHITECT.



- 1 LIGHT BOLLARD - SURFACE MOUNT PER MANUFACTURER'S RECOMMENDATIONS
- 2 4" CONCRETE PAVING AT LIGHTING LOCATION - SEE LAYOUT PLAN FOR LIGHTING LOCATION
- 3 2" DEPTH x 1/2" Ø ANCHOR HOLE. INSTALL STAINLESS STEEL MOUNTING BOLTS WITH ANCHORS PER MANUFACTURER
- 4 1" Ø CONDUIT FOR ELECTRICAL. EXTEND MAXIMUM 2" ABOVE PAVING. SEE-ELECTRICAL PLAN
- 5 FINISH GRADE LANDSCAPE

MANUFACTURER: FORMS + SURFACES
PRODUCT: LBRAD-AC
CONTACT: DAN DELP
PHONE: 480-932-3232
WEBSITE: www.forms-surfaces.com/

NOTES:
1. CONTRACTOR TO OBTAIN AND SUBMIT PRODUCT SPECIFICATIONS TO ARTIST AND OWNER FOR APPROVAL PRIOR TO ORDER / INSTALLATION.
2. USE MANUFACTURER MOUNTING TEMPLATE FOR LAYOUT OF MOUNTING BOLTS.

4 PAVING AT PARASOL STRUCTURES

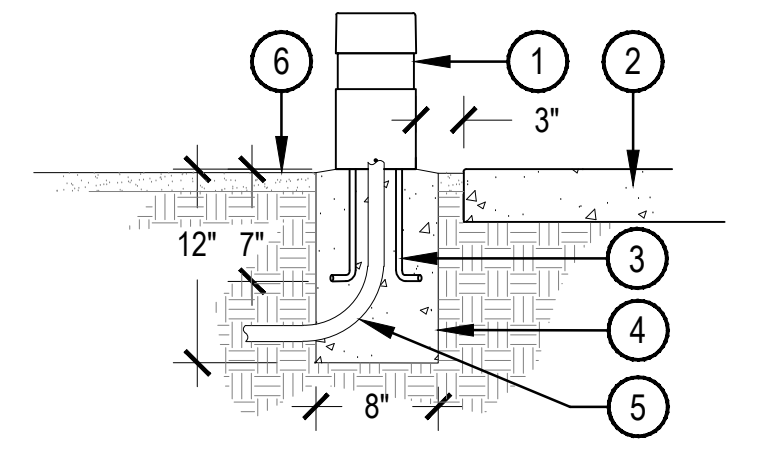
SCALE: 3/16" = 1'-0"

5 CONCRETE BENCH SEAT

SCALE: 1" = 1'-0"

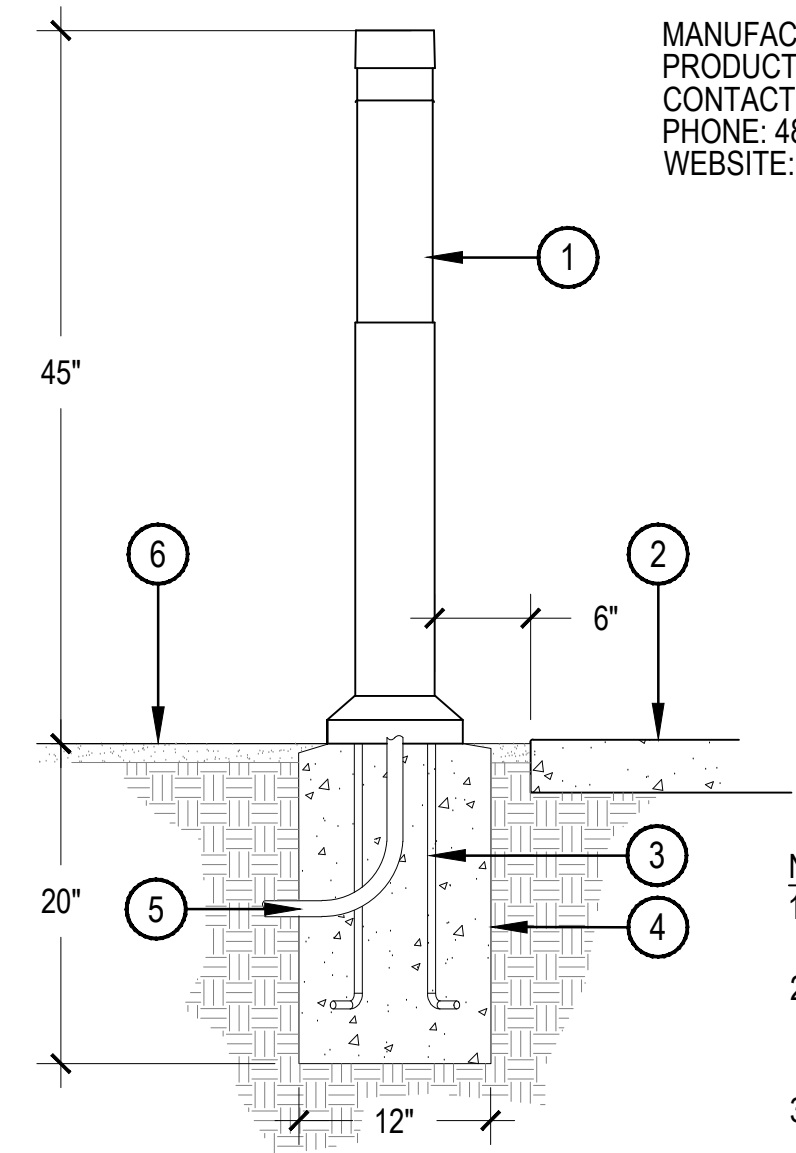
6 RADIA LIGHT BOLLARD ON SLAB

SCALE: 1" = 1'-0"



- 1 LIGHT BOLLARD - INSTALL 3" OFFSET FROM ADJACENT PAVING PER MANUFACTURER'S SPECIFICATIONS
- 2 ADJACENT CONCRETE PAVING SEE LAYOUT PLAN
- 3 (3) 3/8"-16 X 8" GALVANIZED STEEL J-BOLT ANCHORS PER MANUFACTURER. TOP OF J-BOLT TO BE 1" ABOVE TOP OF FOOTER
- 4 8" Ø x 12" CONCRETE FOOTING CROWN TOP FOR DRAINAGE. RAKE TOPDRESS TO EDGE OF LIGHT TO COVER FOOTER
- 5 1" Ø CONDUIT FOR ELECTRICAL. EXTEND MAXIMUM 2" ABOVE PAVING. SEE-ELECTRICAL PLAN
- 6 FINISH GRADE LANDSCAPE

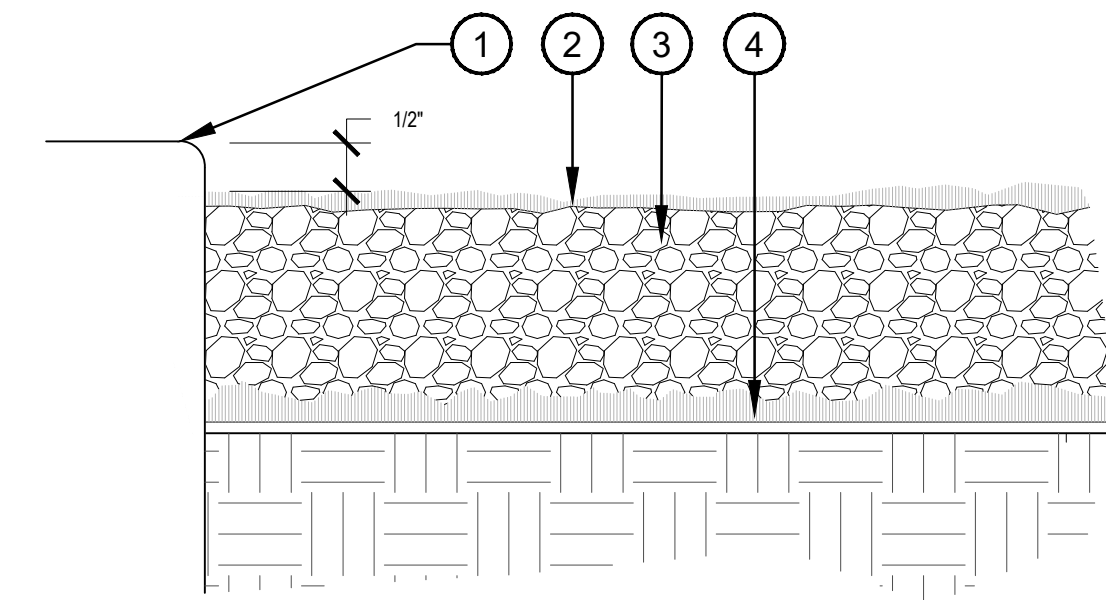
NOTES:
1. CONTRACTOR TO OBTAIN AND SUBMIT PRODUCT SPECIFICATIONS TO ARTIST AND OWNER FOR APPROVAL PRIOR TO ORDER / INSTALLATION.
2. USE MANUFACTURER MOUNTING TEMPLATE FOR LAYOUT OF MOUNTING BOLTS.



MANUFACTURER: FORMS + SURFACES
PRODUCT: LBLCP-504-RGBW
CONTACT: DAN DELP
PHONE: 480-932-3232
WEBSITE: www.forms-surfaces.com/

NOTES:
1. CONTRACTOR TO OBTAIN AND SUBMIT PRODUCT SPECIFICATIONS TO ARTIST AND OWNER FOR APPROVAL PRIOR TO ORDER / INSTALLATION.
2. THE CONTROLLER AND ALL PROGRAMING ARE SUPPLIED BY OTHERS. CONTRACTOR TO OBTAIN PRODUCT FOR OWNER REVIEW AND APPROVAL PRIOR TO INSTALL / ORDER.
3. USE MANUFACTURER MOUNTING TEMPLATE FOR LAYOUT OF MOUNTING BOLTS.

- 1 LIGHT BOLLARD - INSTALL 6" OFFSET FROM ADJACENT PAVING PER MANUFACTURER'S SPECIFICATIONS
- 2 ADJACENT CONCRETE PAVING SEE LAYOUT PLAN
- 3 (3) 1/2"-13 X 18" GALVANIZED STEEL J-BOLT ANCHORS PER MANUFACTURER. TOP OF J-BOLT TO BE 1-1/4" ABOVE TOP OF FOOTER
- 4 12" Ø x 20" CONCRETE FOOTING CROWN TOP FOR DRAINAGE. RAKE TOPDRESS TO EDGE OF LIGHT TO COVER FOOTER
- 5 1" Ø CONDUIT FOR ELECTRICAL. EXTEND MAXIMUM 2" ABOVE PAVING. SEE-ELECTRICAL PLAN
- 6 FINISH GRADE LANDSCAPE



- 1 1/2" REVEAL ON ALL PAVED SURFACES - GRADE FOR MATERIAL DEPTH AND REVEAL
- 2 FINAL APPLICATION OF PRE-EMERGENT HERBICIDE.
- 3 DECOMPOSED GRANITE / DECORATIVE ROCK PER TOPDRESS SCHEDULE - MIN. 2" DEPTH
- 4 APPLY PRE-EMERGENT HERBICIDE TO SUBGRADE

NOTES:
1. APPLY PRE-EMERGENT HERBICIDE PER LABEL DIRECTIONS AND RATE.

7 PATHWAY LIGHT BOLLARD

SCALE: 1" = 1'-0"

8 RGBW LIGHT COLUMN BOLLARD

SCALE: 1" = 1'-0"

9 TOPDRESS

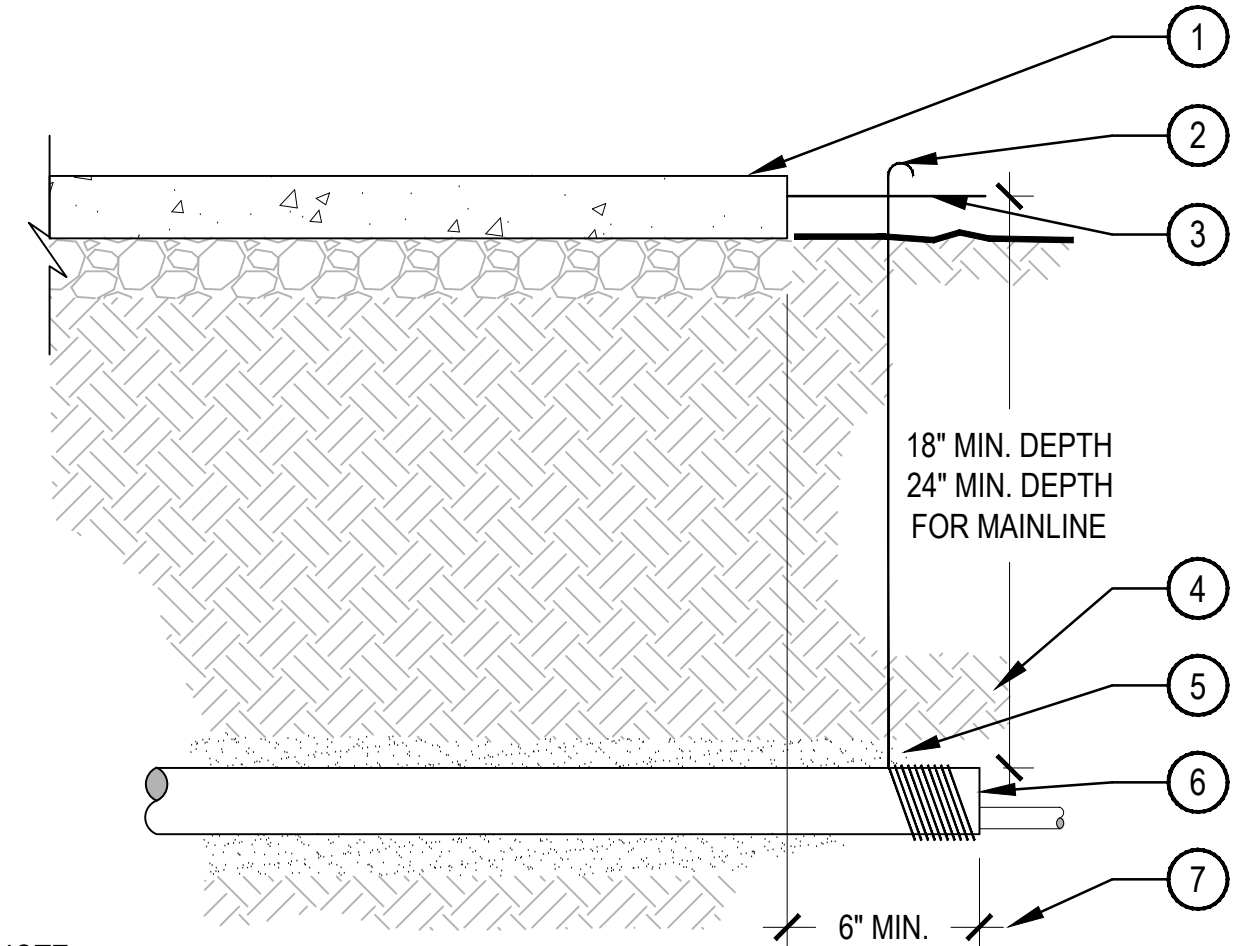
SCALE: NTS

*PER CITY OF PHOENIX CITY CODE CHAPTER 2, SECTION 2-28, THESE PLANS ARE FOR OFFICIAL USE ONLY AND MAY NOT BE SHARED WITH OTHERS EXCEPT AS REQUIRED TO FULFILL THE OBLIGATIONS OF THE CONTRACTOR'S CONTRACT WITH THE CITY OF PHOENIX.





- 1 PAVING
- 2 WRAP 12 GAUGE GALVANIZED WIRE AROUND EACH END OF SLEEVE (10 WRAPS MIN.) AND EXTEND TO SURFACE AS A LOCATING DEVICE
- 3 FINISH GRADE / TOP OF DG
- 4 COMPACT SOIL AROUND SLEEVE TO SAME DENSITY AS ADJACENT UNDISTURBED SOIL
- 5 WASHED AND GRADED MORTAR SAND BACKFILL IN ROCKY SOIL CONDITIONS
- 6 PVC SLEEVE PER SCHEDULE, TWICE DIAMETER OF THE SUM OF THE PIPES/ WIRES
- 7 EXTEND SLEEVES 6" BEYOND EDGES OF PAVING

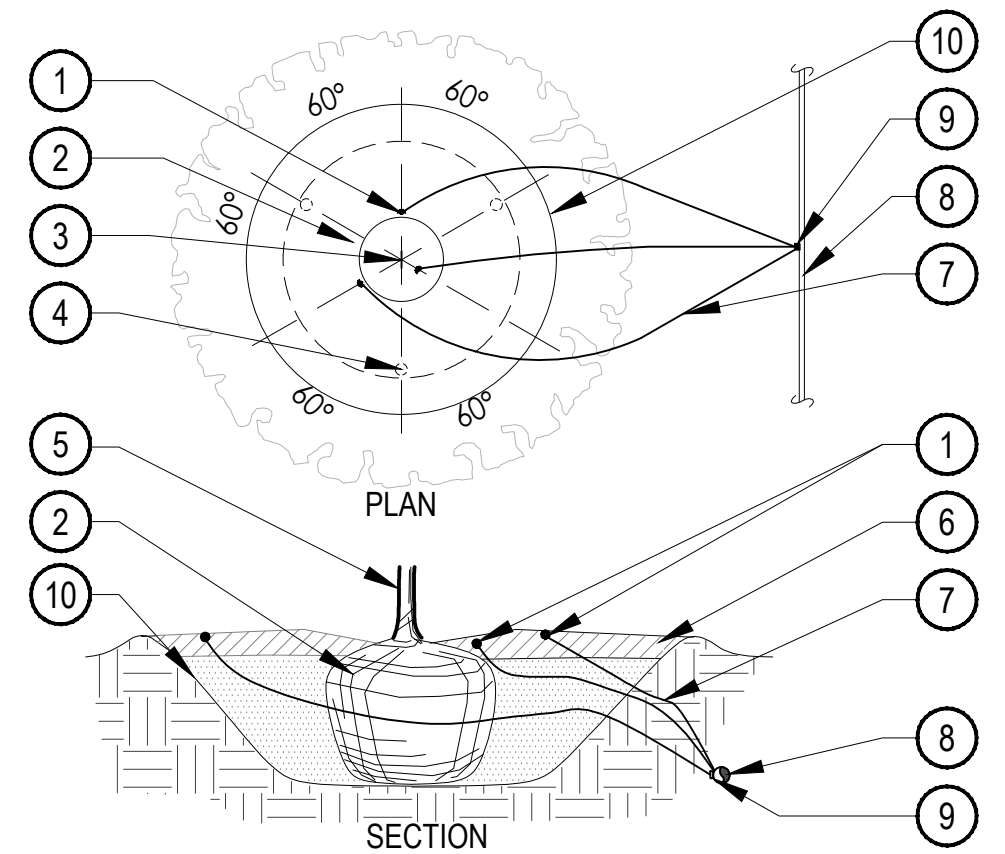


- NOTE:
1. ALL SLEEVES SHALL BE INSPECTED PRIOR TO BACKFILLING.
 2. CAP SLEEVES UNTIL USE.
 3. MULTIPLE SLEEVES REQUIRE 4" HORIZONTAL SEPARATION WITHIN SAME SLEEVE TRENCH.
 4. IRRIGATION PIPE AND WIRE SHALL NOT SHARE THE SAME SLEEVE.
 5. MARK / STAMP - 'X' AND/OR INSTALL PLACARD AT BACK OF CURB.

3 PIPE SLEEVE

SCALE: NTS

- 1 EMISSION POINT, DIFFUSER CAP W/ DRIP STAKE (TYP.)
- 2 PLANT ROOT BALL (TYP.)
- 3 PLANT CENTER (TYP.)
- 4 SECOND EMISSION POINTS SEE NOTE 3 & 4 BELOW
- 5 TREE TRUNK
- 6 MULCH LAYER
- 7 1/4" DISTRIBUTION TUBING (LENGTH NOT TO EXCEED 5')
- 8 3/4" PVC DRIP LATERAL
- 9 MULTI-PORT OUTLET EMITTER
- 10 PLANT PIT

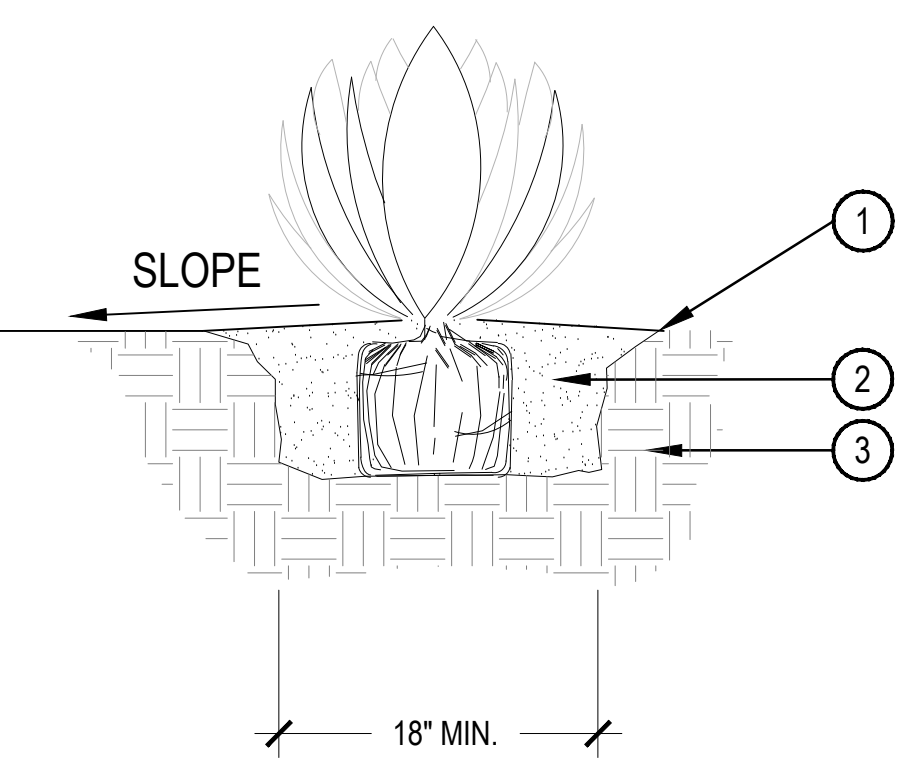


- NOTE:
1. MAXIMUM LENGTH OF ONE DISTRIBUTION TUBE SHALL BE 5'.
 2. FLUSH ALL LINES THOROUGHLY PRIOR TO EMITTER INSTALLATION.
 3. ALL EMISSION POINTS SHALL BE LOCATED ON UPHILL SIDE OF PLANT MATERIAL. AT LEAST ONE EMISSION POINT SHALL BE DIRECTLY TO PLANT BALL AS INDICATED. ADDITIONAL EMISSION POINTS SHALL BE EQUALLY SPACED WITHIN PLANT PIT PERIMETER.
 4. SECOND EMISSION POINTS (AS NEEDED) AS PER THE EMITTER SCHEDULE.
 5. THIS IS A WATERING GUIDE ONLY. SITE, SOIL AND PLANT CONDITIONS VARY GREATLY. CONTRACTOR MUST OBSERVE THE PLANT MATERIAL AND MAKE ADJUSTMENTS AS NECESSARY FOR PROPER PLANT WATER DISTRIBUTION.

6 TREE EMITTER PLACEMENT

SCALE: NTS

- 1 FINISH GRADE
- 2 BACKFILL NATIVE SOIL, THOROUGHLY INCORPORATE .25LBS. OF SOIL SULFUR INTO BACKFILL. WATER SETTLE AND TAMP BACKFILL BELOW ROOT SYSTEM
- 3 UNDISTURBED SUBGRADE

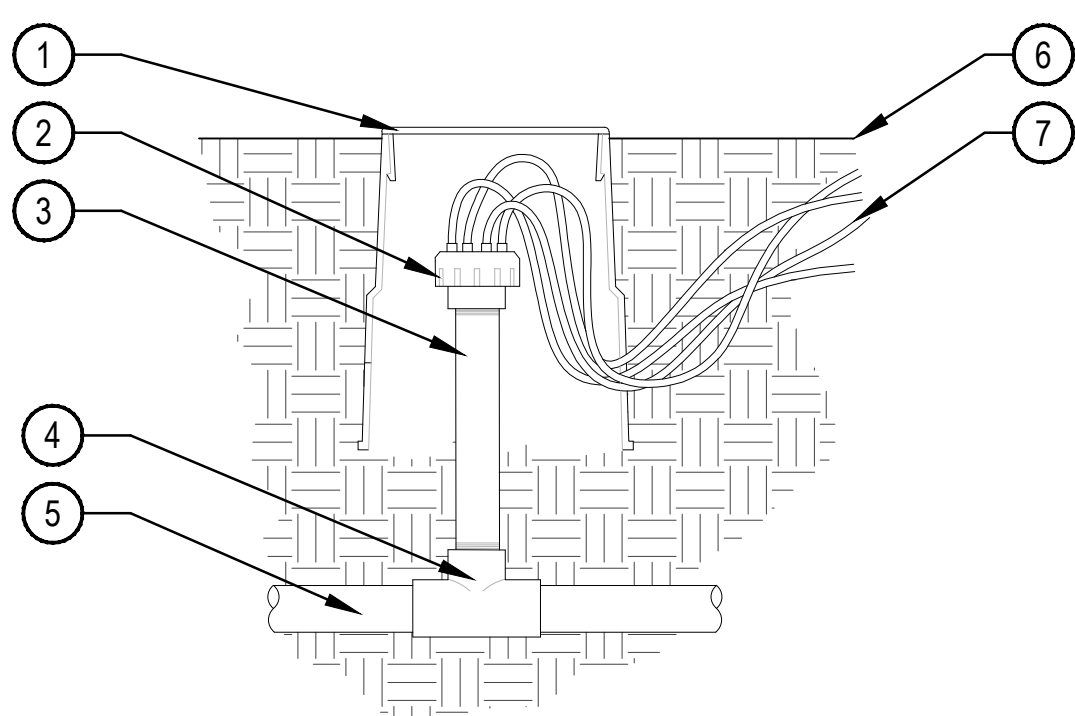


- NOTES:
1. DO NOT CREATE BASIN AT BASE OF ACCENT. SLOPE BACKFILL AWAY FROM PLANT.
 2. USE DRY SITE SOIL ONLY IN PIT -- NO MULCH.

2 ACCENT/ SUCCULENT PLANTING

SCALE: NTS

- 1 6" ROUND BOX & COVER
- 2 MULTI-OUTLET EMITTER (6 OUTLETS)
- 3 1/2" PVC NIPPLE LENGTH AS REQ.
- 4 3/4" x 3/4" x 1/2" PVC ELL. OR TEE
- 5 PVC LATERAL LINE
- 6 FINISH GRADE
- 7 1/4" DISTRIBUTION TUBING MAX. LENGTH 5' ROUTE TUBING THROUGH OR UNDER SIDE OF VALVE BOX

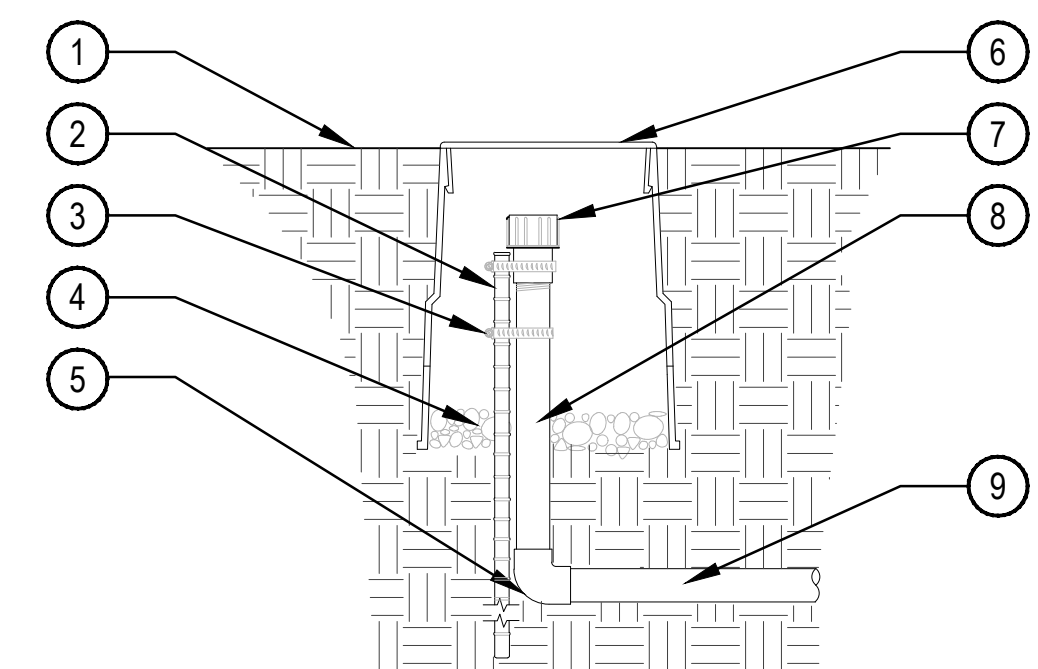


- NOTE:
1. COMPACT SOIL AROUND MULTI-OUTLET EMITTER TO THE SAME DENSITY AS ADJACENT UNDISTURBED SUBGRADE.
 2. WHEN SLOPING CONDITIONS OCCUR PLACE EMITTERS ON UPHILL SIDE OF PLANT MATERIAL.
 3. DO NOT DISTURB ROOTBALL WITH THE INSTALLATION OF DRIP LATERAL OR 1/4" DISTRIBUTION TUBING.
 4. ALL THREADED CONNECTIONS SHALL BE COATED WITH TEFLON TAPE.

5 MULTI-OUTLET EMITTER (PVC)

SCALE: NTS

- 1 FINISH GRADE
- 2 24" #4 REBAR
- 3 (2) STAINLESS STEEL CLAMPS
- 4 3/4" GRAVEL SUMP - 4" DEPTH
- 5 SCH 80 PVC ELL
- 6 LOCKING ROUND BOX & COVER PER SCHEDULE, TOP OF BOX TO BE FLUSH WITH FINISH GRADE
- 7 HOSE END FLUSH CAP
- 8 SCH 80 PVC TOE NIPPLE (LENGTH AS REQUIRED)
- 9 PVC LATERAL

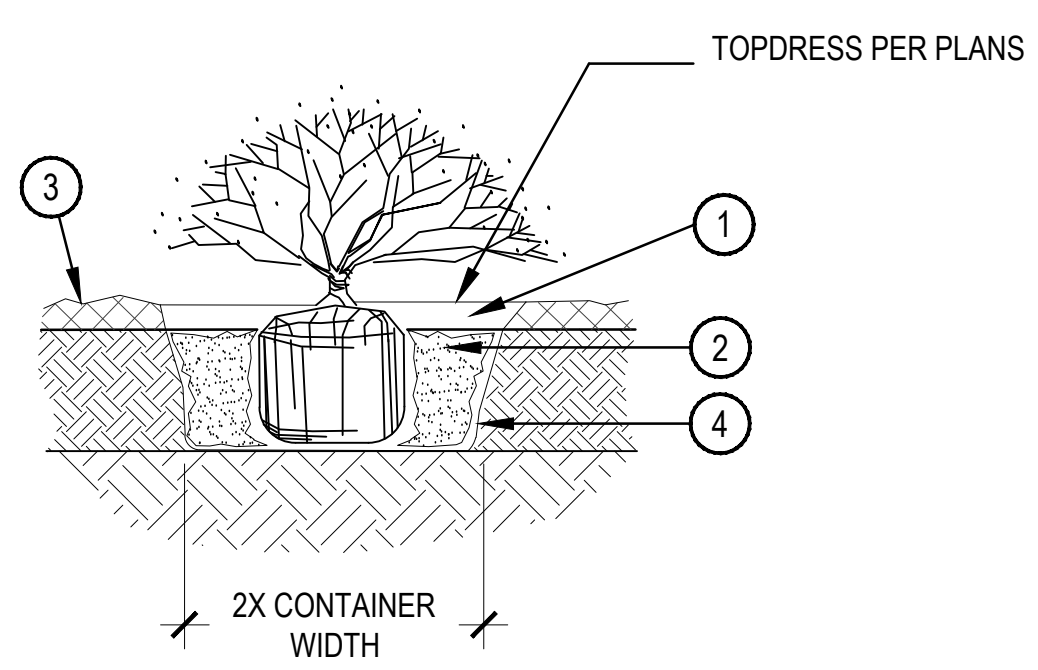


- NOTE:
1. DO NOT PLACE 10" LOCKING ROUND BOX ON LATERAL.
 2. COMPACT SOIL AROUND GATE VALVE ASSEMBLY TO THE SAME DENSITY AS ADJACENT UNDISTURBED SUBGRADE.
 3. SECURE STAKE TO FLUSH END CAP OR PVC NIPPLE WITH A MINIMUM OF 2 STAINLESS STEEL WORM DRIVE CLAMPS.
 4. ALL THREADED CONNECTIONS SHALL BE COATED WITH TEFLON TAPE.

8 FLUSH END CAP

SCALE: NTS

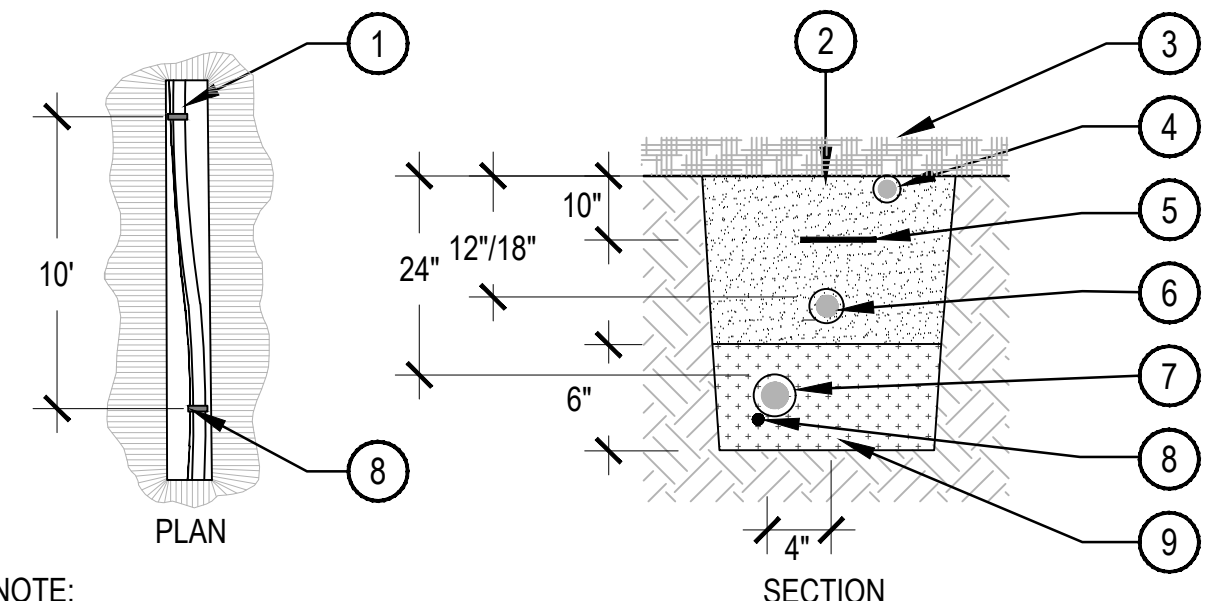
- 1 3" DEEP WELL. BLEND TO FINISHED GRADE
- 2 BACKFILL WITH NATIVE SOIL. HOLE SIZE: 2X WIDTH OF ROOTBALL. LOOSEN SOIL 3X WIDTH OF ROOTBALL. WATER SETTLE
- 3 FINISH GRADE (TOP OF MULCH)
- 4 SIDES OF PLANT PIT SHALL BE SCARIFIED AND SLOPING



- NOTES:
1. BROKEN OR CRUMBLING ROOT-BALLS WILL BE REJECTED. CARE SHOULD BE TAKEN NOT TO DAMAGE THE SHRUB OR ROOT-BALL WHEN REMOVING IT FROM ITS CONTAINER.
 2. DIG PLANT PIT TWICE AS WIDE AND HIGH AS THE CONTAINER. PRUNE ALL DEAD OR DAMAGED WOOD PRIOR TO PLANTING.

1 SHRUB + GROUNDCOVER PLANTING

SCALE: 1-1/2" = 1'-0"

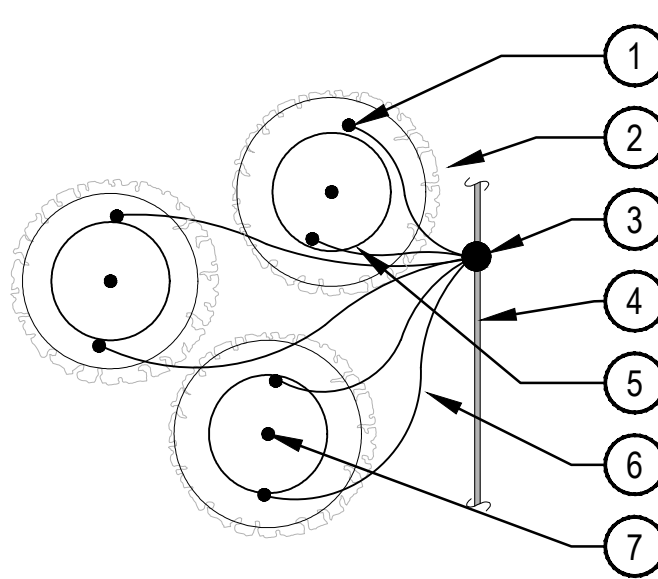


- NOTE:
1. ALL MAINLINES TO BE INSTALLED IN ACCORDANCE WITH MANUFACTURER'S SPECIFICATIONS.
 2. ALL PVC PIPING TO BE SNAKED IN TRENCHES AS SHOWN IN PLAN VIEW ABOVE.
 3. PROVIDE HORIZONTAL OFFSET FOR PIPING IN SHARED TRENCHES.
 4. ALL 120 VOLT WIRING IN CONDUIT TO BE INSTALLED AS PER LOCAL CODES.
 5. ALL ELECTRICAL WIRE CONNECTIONS TO VALVES AND SPLICES TO BE INSTALLED WITHIN A VALVE BOX AND MADE WITH DBY WATERPROOF CONNECTORS, OR APPROVED EQUAL.
 6. BUNDLE AND TAPE CONTROLLER WIRING PER NOTES AND INSTALL WITHIN MAINLINE TRENCH WHEREVER POSSIBLE.
 7. CONTROLLER WIRE TO BE BURIED AT 18" MIN DEPTH IF NOT LOCATED WITH MAINLINE.
 8. MAINLINE BEDDING MATERIAL SHALL BE 1/4" MINUS SAND, AND SHALL BE 3" BELOW PIPE OR WIRE AND 3" ABOVE MAINLINE.
 9. BEDDING IS NOT REQUIRED IN POLYETHYLENE TUBING TRENCHES OR SHARED TRENCHES.
 10. EXCAVATED COVER MATERIAL SHALL BE FREE FROM DEBRIS AND ROCKS 1/2" OR GREATER.

- 1 SNAKE PVC OR POLYETHYLENE PIPE IN TRENCH
- 2 EXCAVATED COVER MATERIAL (SEE NOTES)
- 3 FINISH GRADE/TOP OF MULCH
- 4 POLYETHYLENE DRIP LATERAL (INSTALL JUST BELOW ROUGH GRADE TO PROVIDE UV COVER PRIOR TO MULCH LAYER)
- 5 MAINLINE MARKING TAPE (PURPLE MARKING TAPE IF RECLAIMED)
- 6 IRRIGATION SPRAY LATERAL PIPE 12" DEPTH FOR SPRAY LATERALS 18" FOR ROTOR LATERALS
- 7 IRRIGATION MAINLINE PIPE
- 8 VALVE WIRING, BUNDLE AND TAPE PER IRRIGATION NOTES
- 9 BEDDING MATERIAL (SEE NOTES)

4 PIPE TRENCH

SCALE: NTS



- NOTES:
1. MAXIMUM LENGTH OF ONE 1/4" DISTRIBUTION TUBE SHALL BE 5'.
 2. ONE EMITTER - ON TOP OF ROOTBALL.
 3. TWO EMITTERS - SPACE ON OPPOSING SIDES OF ROOT BALL.
 4. THREE OR MORE EMITTERS - SPACE EQUALLY AROUND EDGE OF ROOTBALL.
 5. FLUSH ALL LINES THOROUGHLY PRIOR TO EMITTER INSTALLATION.
 6. IF PLANTING ON A SLOPE, INSTALL BOTH EMITTERS ON THE UPHILL SIDE OF ROOTBALL.
 7. THIS IS A WATERING GUIDE ONLY. SITE, SOIL AND PLANT CONDITIONS VARY GREATLY. CONTRACTOR MUST OBSERVE THE PLANT MATERIAL AND MAKE ADJUSTMENTS AS NECESSARY FOR PROPER PLANT WATER REQUIREMENT.

- 1 DIFFUSER CAP AND DRIP STAKE
- 2 PLANTING BACKFILL MATERIAL
- 3 MULTI-OUTLET EMITTER
- 4 PVC LATERAL
- 5 PLANT ROOTBALL
- 6 1/4" DISTRIBUTION TUBING
- 7 CENTER OF PLANT

7 SHRUB EMITTER PLACEMENT

NTS

