



**City of Phoenix
Office of the City Engineer
Design and Construction Procurement**

**EDISON IMPACT HUB CONSTRUCTION
DESIGN-BID-BUILD**

PROJECT NO. AH20300003

**PROCUREPHX PRODUCT CATEGORY CODE 912000000
RFx 6000001671**

ADDENDUM NO. 3

ISSUE DATE: 10/22/24

Bidders are hereby notified that the Bidding and Contract Documents for the above project, for which Bids are to be received on October 29, 2024, are amended as follows:

Q1.	Will fire sprinklers and the applicable deferred submittal be required?
A1.	Yes. See A100 "DEFERRED SUBMITTALS"
Q2.	Will fire alarm and the applicable deferred submittal be required?
A2.	Yes. See A100 "DEFERRED SUBMITTALS"
Q3.	Please confirm that the requirement for the bidding General Contractor to have a minimum of 5 years experience working on historic preservation projects is no longer applicable.
A3.	The requirement to have 5 years historic preservation project experience is no longer applicable.
Q4.	Please confirm that all ground areas that will be disturbed by construction activities must be excavated to a depth of 5'.
A4.	The site is currently undergoing archaeological excavation down to 5'. Therefore, the contractor will be required to excavate down to the extent of disturbance (expected to be 5' deep) and recompact the soil in lifts to the recommended compaction levels. Please refer to Geotechnical Evaluation Report by Western Technologies.
Q5.	Confirm that all wiring and devices for all low voltage, telco, and other similar items is done by others. We are only to include the conduit and j-boxes as needed.
A5.	See attached "Edison Impact Hub IT/low Voltage Scope Statement".
Q6.	Please confirm all hazardous material abatement has already been completed and not included in the scope (except for coordinating lead paint abatement on existing windows which is also to be done by others).
A6.	The majority of the abatement has been completed. The following items still need to be completed: 1) The lead paint abatement on the exterior including the courtyard area and enclosed porch area. The lead work will include stabilization and component removal, 2) The removal of lead sheeting at the roof penetrations, 3) The removal of asbestos roof mastic and

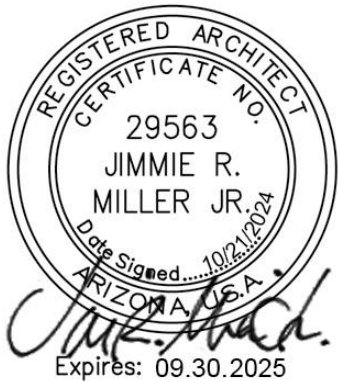
	sealants. The asbestos and lead abatement will be abated by the abatement contractor and monitored by an abatement monitor. Contractor will need to coordinate the timing of the removal of these components with the abatement contractor.
Q7.	Confirm roughly a mid-February 2025 start.
A7.	That is correct. Construction is expected to begin in mid-February.

NOTE: Bidders must acknowledge receipt of this Addendum by listing the number and date, where provided, on the PROPOSAL P-1.

END OF ADDENDUM

Attachment:
IT/Low Voltage Scope Statement

TECHNICAL REGISTRANT’S SEAL



Architect’s Seal covers architectural items only
(Excludes Hazardous Material Information or other responses not provided by the Architect)
Electronic copy of final document; sealed original document is with Jimmie R. Miller Jr.; Registered Architect AZ. 29563

Edison Impact Hub IT/Low Voltage Scope Statement*

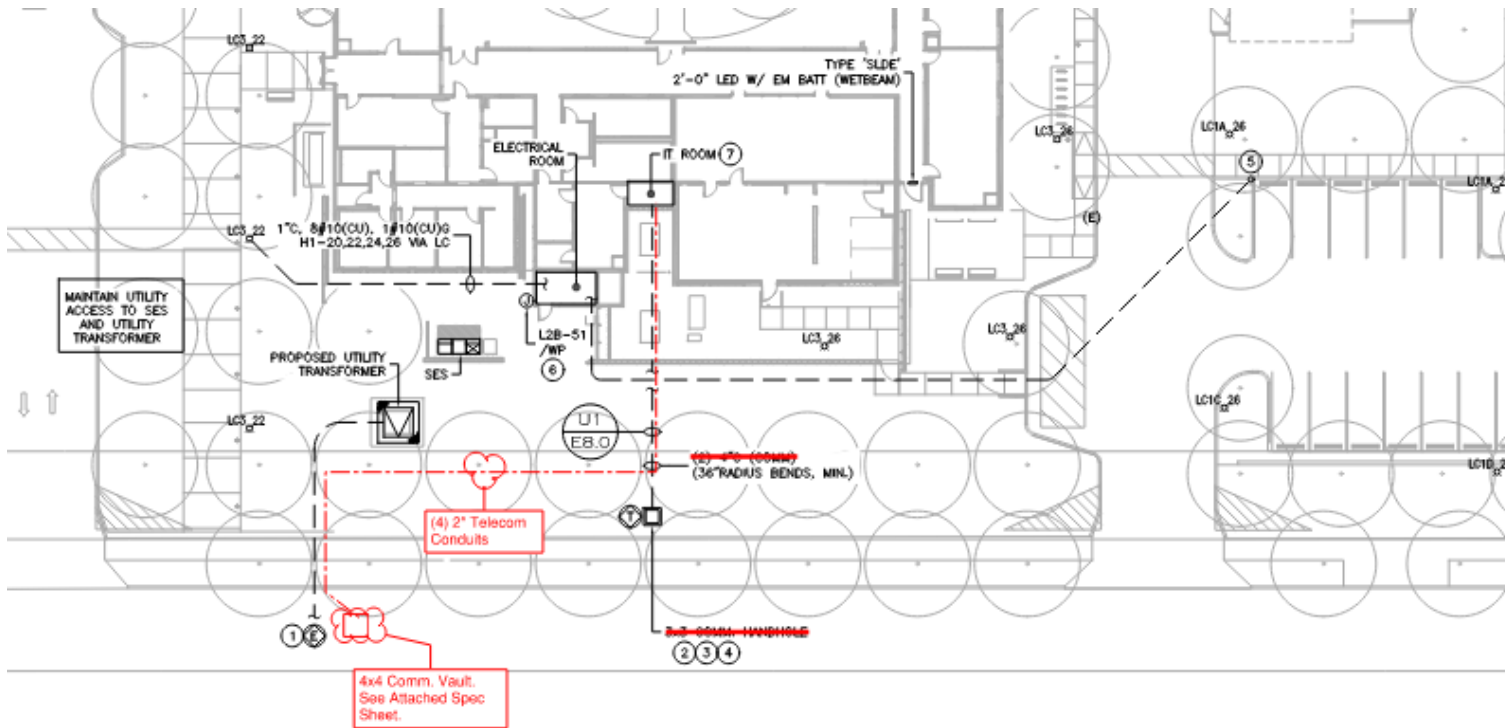
City of Phoenix ITS will handle all telecom cabling installation and telecom room equipment build out. GC will be responsible for all grounding/bonding other than telecom racks, cabinets, and ladder racks, these items will be installed by City of Phoenix Information Technology Department Contractor. The general contractor will be responsible to provide telecom basket tray in an accessible space for telecom cabling support throughout the building. GC will also be responsible for conduit pathway from the basket tray to all telecom end device locations, (4) 2” conduits from the telecom room on the south end of the building to the telecom room on the north end of the building for backbone pathway.

The GC will be responsible for installing a 4x4 vault near the property line with (4) new 2” conduits in a joint trench with APS, these conduits will stub into the telecom room on the south end of the building (See Electrical Site Plan, attached) .

The GC will NOT be responsible for the installation of any telecom cabling , Lumen and COX will install their cabling and equipment from their service location into the south telecom room. ITS will be responsible for the cabling to any devices including Wi Fi and internet.

GC does NOT need to install any telecom wiring or cable. ITS, Lumen, and COX will be providing all the necessary equipment for the project other than any equipment the tenants will be using for their network.

*Information provided by City of Phoenix ITS



1 ELECTRICAL SITE PLAN
SCALE: 1"=20'-0"

KEYED NOTES

1. ESTIMATED POINT OF CONNECTION, UTILITY PRIMARY AS COORDINATED WITH UTILITY. ESTIMATE 100LF PRIMARY FOR THE PURPOSE OF THE BID.
2. ESTIMATED POINT OF CONNECTION (DATA/TEL), COMMUNICATIONS HANDHOLES. COORDINATE WITH DATA/TEL/CABLE UTILITIES.
3. ESTIMATED POINT OF CONNECTION (CABLE).
4. PROVIDE & INSTALL HANDHOLES WITH LOCKABLE COVERS.
5. STUB & CAP 1-1/2" CONDUIT FOR FUTURE EV CHARGER(S).
6. IRRIGATION CONTROLLER. COORDINATE FINAL LOCATION(S) WITH LANDSCAPE PLANS. (1) 3/4", 2#12(CU), 1#12(CU)G AT EACH LOCATIONS. 2 TOTAL PER LANDSCAPE DRAWINGS.
7. ~~INSTALL 1" TO EACH POLE FOR LOW VOLTAGE SYSTEMS, DAILY CHAINED, AND ROUTED TO MAIN IT ROOM. INSTALL PRECAST #5 LOW VOLTAGE HANDHOLES AS NEEDED.~~

The crossed out section can be disregard Lumen and COX will be responsible for the conduit pathway from our 4x4 vault at the property line to their pole or pedestal that their service will be coming from.

Change to #7 Low Voltage Hand holes. See attached Spec Sheet.