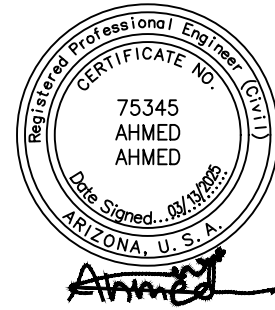




City of Phoenix

Water Services Department
200 West Washington Street, 8th Floor
Phoenix, Arizona 85003-1611



PROJECT NO.: WS90500273-3
LARGE DIAMETER SS REHAB
GRADE 5&4 MANHOLES SOUTH

ADDENDUM NO. 1 MARCH 13, 2025

Bidders are hereby notified that the Contract Documents for the above project for are amended as follows:

Volume 2 of 3 Technical Specifications

Buckeye Rd & 83rd Ave Package

1. Section 01025 — Measurement and Payment
 - a. Add Paragraph 3.19, Page 01025-9 as follows:

3.19 BID ITEM NO. 19: OLD STREET CUT SURFACE RESTORATION

- A. This Bid Item is full compensation for all work associated with the additional asphalt surface restoration required for OLD Street (paved longer than 24 months) asphalt cuts under the City of Phoenix Street Pavement Cut Policy, Updated Pavement Cut Policy - Effective July 1, 2017 (See Article III, Chapter 31-49.1). Refer to following website for additional information: (<https://www.phoenix.gov/pavement-cut-policy-revision>).
- B. Work is defined with in the Pavement Cut Policy referenced above which generally includes application of a slurry seal pavement treatment to the half width of an arterial or collector street, or the full width of a local street, and application of a crack fill and seal between existing and new pavement areas prior to any pavement treatment. The treatment must extend a minimum of 25 feet in both directions from the pavement cut(s) or damaged asphalt. Testing and quality control as required per the specifications is included.
- C. Measurement for payment shall be per EACH manhole location requiring

structural insert, flat top replacement, or manhole replacement within an OLD Street as defined above.

2. Section 01064 — Inspection and Testing

- a. Delete Paragraph 1.1, Subparagraph C, Page 01064-1 and replace with the following: The CONTRACTOR shall provide testing as approved by the OWNER as noted within the contract documents including these specifications and associated drawings. Cost of inspection and testing shall be the responsibility of the CONTRACTOR with the exclusion of material testing provided by the City of Phoenix Street Transportation Department, specified in paragraph D within this section.
- b. Delete Paragraph 1.1, Subparagraph D, Page 01064-1 and replace with the following: Work within the City of Phoenix Right of Way will be subject to City of Phoenix Street Transportation Department material testing. Testing to include concrete, asphalt, material sampling, and compaction. The CONTRACTOR shall notify the ENGINEER and OWNER before material testing is performed. Material testing will be performed by the City of Phoenix Street Transportation Department and shall be coordinated by the CONTRACTOR a minimum of 48 hours in advance.

Baseline Rd & 48th St Package

1. Section 01025 — Measurement and Payment

- a. Add Paragraph 3.16, Page 01025-7 as follows:

3.16 BID ITEM NO. 16: NEW STREET CUT SURFACE RESTORATION

- A. This Bid Item is full compensation for all work associated with the additional asphalt surface restoration required for NEW Street (paved within the last 24 months) asphalt cuts under the City of Phoenix Street Pavement Cut Policy, Updated Pavement Cut Policy - Effective July 1, 2017 (See Article III, Chapter 31-49.1). Refer to following website for additional information: (<https://www.phoenix.gov/pavement-cut-policy-revision>).
- B. Work is defined with in the Pavement Cut Policy referenced above which generally includes application of an asphalt mill and overlay/inlay pavement treatment to the full width of all impacted lanes of an arterial, collector, or local street as a result of the cut(s) and application of a slurry seal pavement treatment to the half width of an arterial or collector street, or the full width of a local street, and application of a crack fill and seal between existing and new pavement areas prior to any pavement treatment. The treatment must extend a minimum of 25 feet in both directions from the pavement cut(s) or damaged asphalt. Testing and quality control as required per the specifications is included.
- C. Measurement for payment shall be per EACH manhole location requiring structural insert, flat top replacement, or manhole replacement within an NEW Street as defined above.

- b. Add Paragraph 3.17, Page 01025-8 as follows:

3.17 BID ITEM NO. 17: OLD STREET CUT SURFACE RESTORATION

- A. This Bid Item is full compensation for all work associated with the additional asphalt surface restoration required for OLD Street (paved longer than 24 months) asphalt cuts under the City of Phoenix Street Pavement Cut Policy, Updated Pavement Cut Policy - Effective July 1, 2017 (See Article III, Chapter 31-49.1). Refer to following website for additional information: (<https://www.phoenix.gov/pavement-cut-policy-revision>).
- B. Work is defined with in the Pavement Cut Policy referenced above which generally includes application of a slurry seal pavement treatment to the half width of an arterial or collector street, or the full width of a local street, and application of a crack fill and seal between existing and new pavement areas prior to any pavement treatment. The treatment must extend a minimum of 25 feet in both directions from the pavement cut(s) or damaged asphalt. Testing and quality control as required per the specifications is included.
- C. Measurement for payment shall be per EACH manhole location requiring structural insert, flat top replacement, or manhole replacement within an OLD Street as defined above.

2. Section 01064 — Inspection and Testing

- a. Delete Paragraph 1.1, Subparagraph C, Page 01064-1 and replace with the following: The CONTRACTOR shall provide testing as approved by the OWNER as noted within the contract documents including these specifications and associated drawings. Cost of inspection and testing shall be the responsibility of the CONTRACTOR with the exclusion of material testing provided by the City of Phoenix Street Transportation Department, specified in paragraph D within this section.
- b. Delete Paragraph 1.1, Subparagraph D, Page 01064-1 and replace with the following: Work within the City of Phoenix Right of Way will be subject to City of Phoenix Street Transportation Department material testing. Testing to include concrete, asphalt, material sampling, and compaction. The CONTRACTOR shall notify the ENGINEER and OWNER before material testing is performed. Material testing will be performed by the City of Phoenix Street Transportation Department and shall be coordinated by the CONTRACTOR a minimum of 48 hours in advance.

I-10 & Chandler Blvd Package

1. Section 01025 — Measurement and Payment

- a. Add Paragraph 3.13, Page 01025-6 as follows:

3.13 BID ITEM NO. 13: NEW STREET CUT SURFACE RESTORATION

- A. This Bid Item is full compensation for all work associated with the additional asphalt surface restoration required for NEW Street (paved within the last 24 months) asphalt cuts under the City of Phoenix Street Pavement Cut Policy, Updated Pavement Cut Policy - Effective July 1, 2017 (See Article III, Chapter 31-49.1). Refer to following website for additional information: (<https://www.phoenix.gov/pavement-cut-policy-revision>).
- B. Work is defined with in the Pavement Cut Policy referenced above which generally includes application of an asphalt mill and overlay/inlay pavement treatment to the full width of all impacted lanes of an arterial, collector, or local street as a result of the cut(s) and application of a slurry seal pavement treatment to the half width of an arterial or collector street, or the full width of a local street, and application of a crack fill and seal between existing and new pavement areas prior to any pavement treatment. The treatment must extend a minimum of 25 feet in both directions from the pavement cut(s) or damaged asphalt. Testing and quality control as required per the specifications is included.
- C. Measurement for payment shall be per EACH manhole location requiring structural insert, flat top replacement, or manhole replacement within an NEW Street as defined above.

b. Add Paragraph 3.14, Page 01025-6 as follows:

3.14 BID ITEM NO. 14: OLD STREET CUT SURFACE RESTORATION

- A. This Bid Item is full compensation for all work associated with the additional asphalt surface restoration required for OLD Street (paved longer than 24 months) asphalt cuts under the City of Phoenix Street Pavement Cut Policy, Updated Pavement Cut Policy - Effective July 1, 2017 (See Article III, Chapter 31-49.1). Refer to following website for additional information: (<https://www.phoenix.gov/pavement-cut-policy-revision>).
- B. Work is defined with in the Pavement Cut Policy referenced above which generally includes application of a slurry seal pavement treatment to the half width of an arterial or collector street, or the full width of a local street, and application of a crack fill and seal between existing and new pavement areas prior to any pavement treatment. The treatment must extend a minimum of 25 feet in both directions from the pavement cut(s) or damaged asphalt. Testing and quality control as required per the specifications is included.
- C. Measurement for payment shall be per EACH manhole location requiring structural insert, flat top replacement, or manhole replacement within an OLD Street as defined above.

2. Section 01064 — Inspection and Testing

- a. Delete Paragraph 1.1, Subparagraph C, Page 01064-1 and replace with the following: The CONTRACTOR shall provide testing as approved by the OWNER

as noted within the contract documents including these specifications and associated drawings. Cost of inspection and testing shall be the responsibility of the CONTRACTOR with the exclusion of material testing provided by the City of Phoenix Street Transportation Department, specified in paragraph D within this section.

- b. Delete Paragraph 1.1, Subparagraph D, Page 01064-1 and replace with the following: Work within the City of Phoenix Right of Way will be subject to City of Phoenix Street Transportation Department material testing. Testing to include concrete, asphalt, material sampling, and compaction. The CONTRACTOR shall notify the ENGINEER and OWNER before material testing is performed. Material testing will be performed by the City of Phoenix Street Transportation Department and shall be coordinated by the CONTRACTOR a minimum of 48 hours in advance.

Volume 3 of 3 Drawings

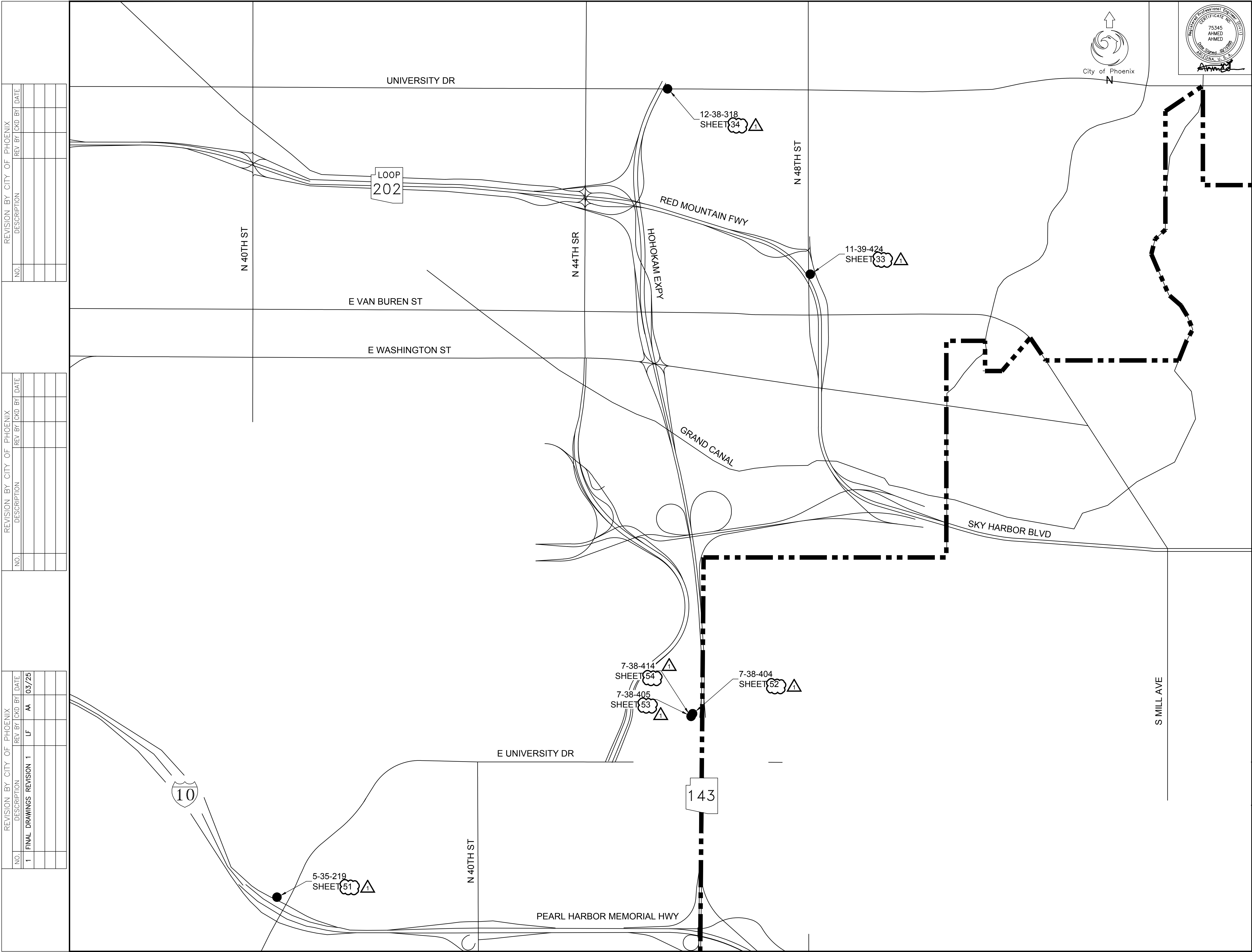
Baseline Rd & 48th St Package

1. Drawing G-005
 - a. Delete drawing in its entirety and replace with the attached.
2. Drawing G-006
 - a. Delete drawing in its entirety and replace with the attached.
3. Drawing G-007
 - a. Delete drawing in its entirety and replace with the attached.

Schedule of Values

1. Delete Schedule of Values in its entirety and replace with the attached.

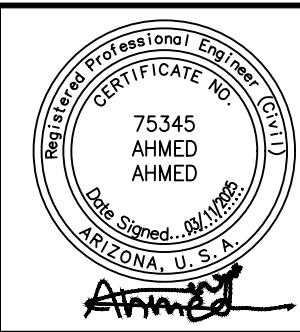
END OF ADDENDUM NO. 1



REVISION BY CITY OF PHOENIX		
NO.	DESCRIPTION	REV BY / CDD BY / DATE

REVISION BY CITY OF PHOENIX		
NO.	DESCRIPTION	REV BY / CDD BY / DATE

REVISION BY CITY OF PHOENIX		
NO.	DESCRIPTION	REV BY / CDD BY / DATE
1	FINAL DRAWINGS REVISION 1	LF AA 03/25



F.H.W.A. REGION	STATE	PROJECT NO.	SHEET NO.	TOTAL SHEETS	AS BUILT
9	ARIZ.	WS90500273	6	54	
Brown and Caldwell 2 N. Central Avenue, Suite 1600 Phoenix, AZ 85004 Phone: 602-567-4000					
DES:	AA	DR:	LF	CK:	LC
DATE:					

QUARTER SECTIONS	
1-16	
1-17	
1-38	
1-39	
2-15	
2-16	
2-17	
2-38	
2-39	
2-40	
4-21	
5-35	
7-38	
11-39	
12-38	

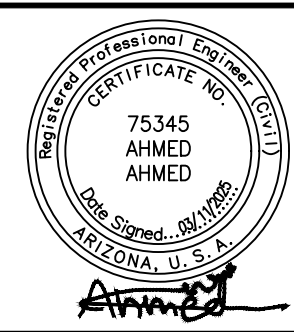
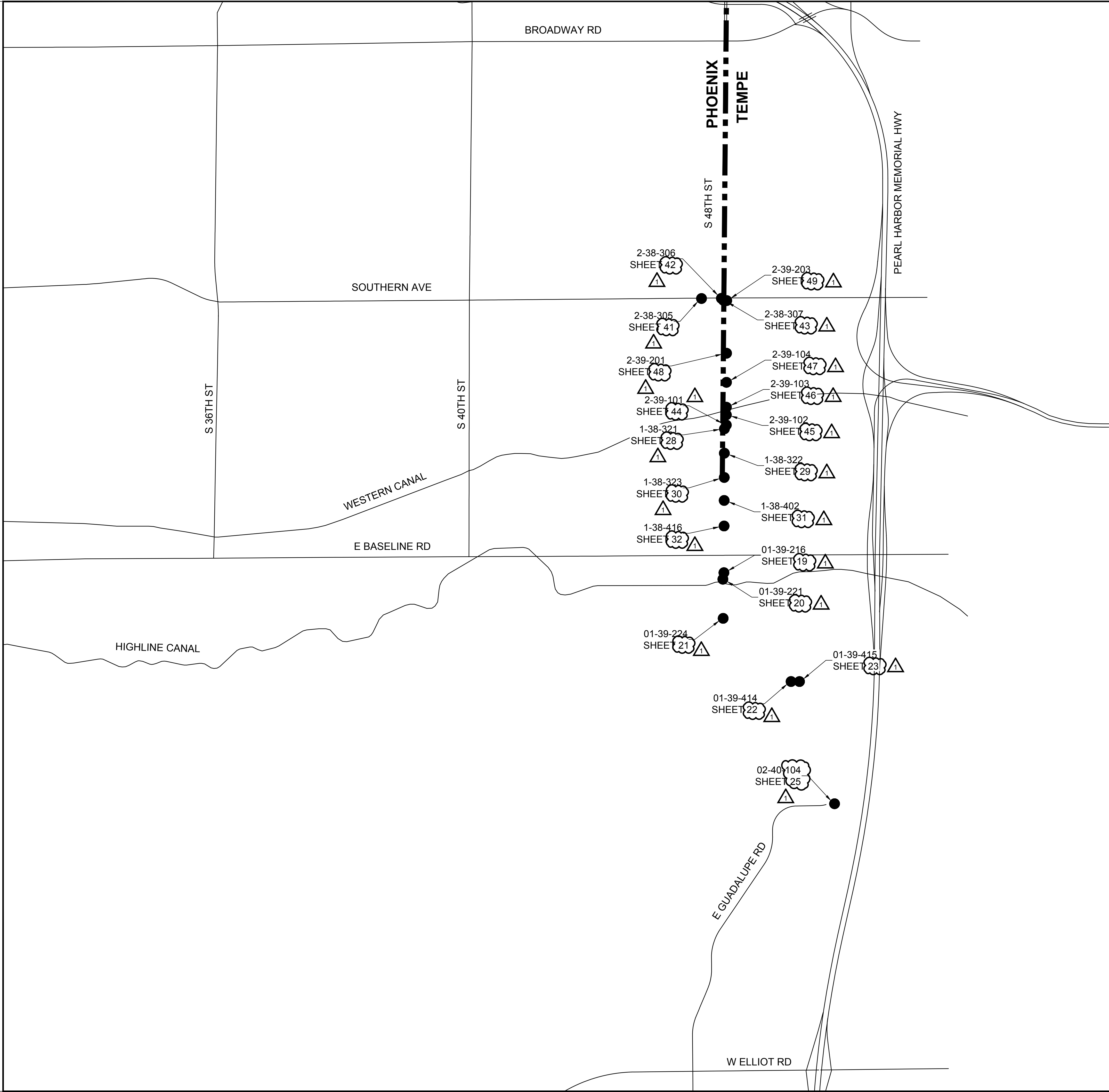
"PER PHOENIX CITY CODE CHAPTER 2, SECTION 2-28, THESE PLANS ARE FOR OFFICIAL USE ONLY AND MAY NOT BE FURNISHED FOR INSPECTION OR COPYING, EXCEPT AS SPECIFICALLY STATED IN THE CITY CODE, OR AS REQUIRED BY LAW." THIS DOCUMENT MUST BE KEPT SECURE AT ALL TIMES.

LARGE DIAMETER SANITARY SEWER
REHABILITATION - GRADE 5 & 4 MANHOLES - SOUTH
BASELINE ROAD & 48TH STREET
CITY OF PHOENIX, ARIZONA
WATER SERVICES DEPARTMENT

MANHOLE LOCATION MAP - 2

G-006 SCALE: NONE	SHEET NO: 6	TOTAL SHEETS 54	AS BUILT
----------------------	----------------	--------------------	--------------

REVISION BY CITY OF PHOENIX					REVISION BY CITY OF PHOENIX					REVISION BY CITY OF PHOENIX				
NO.	DESCRIPTION	REV BY	CHK BY	DATE	NO.	DESCRIPTION	REV BY	CHK BY	DATE	NO.	DESCRIPTION	REV BY	CHK BY	DATE
1	FINAL DRAWINGS	1	LF	AA	03/25									



F.H.W.A. REGION	STATE	PROJECT NO.	SHEET NO.	TOTAL SHEETS	AS BUILT	
9	ARIZ.	WS90500273	7	54		
Brown and Caldwell						
2 N. Central Avenue, Suite 1600 Phoenix, AZ 85004 Phone: 602-567-4000						
DES:	AA	DR:	LF	CK:	LC	DATE:

QUARTER SECTIONS

- 1-16
- 1-17
- 1-38
- 1-39
- 2-15
- 2-16
- 2-17
- 2-38
- 2-39
- 2-40
- 4-21
- 5-35
- 7-38
- 11-39
- 12-38



"PER PHOENIX CITY CODE CHAPTER 2, SECTION 2-28, THESE PLANS ARE FOR OFFICIAL USE ONLY AND MAY NOT BE FURNISHED FOR INSPECTION OR COPYING, EXCEPT AS SPECIFICALLY STATED IN THE CITY CODE, OR AS REQUIRED BY LAW." THIS DOCUMENT MUST BE KEPT SECURE AT ALL TIMES.

LARGE DIAMETER SANITARY SEWER
REHABILITATION - GRADE 5 & 4 MANHOLES - SOUTH
BASELINE ROAD & 48TH STREET

CITY OF PHOENIX, ARIZONA
WATER SERVICES DEPARTMENT

MANHOLE LOCATION MAP - 3

G-007
SCALE: NONE

SHEET NO.	TOTAL SHEETS	AS BUILT
7	54	

SCHEDULE OF VALUES

City of Phoenix Water Services Department

Large Diameter Sanitary Sewer Rehabilitation - Grade 5 & 4 Manholes - South - Bid Packages

Project Number: WS90500273

Bid Schedule

Bid Item No.	Quantity	Unit	Description	Unit Price	Extended Total Price
1A	1675	SQFT	EPOXY COATING REHABILITATION IN MANHOLE ABOVE CHANNEL		
2A	415	SQFT	EPOXY COATING REHABILITATION IN MANHOLE CHANNEL		
3A	5	EA	FLAT TOP REPLACEMENT WITH PRECAST POLYMER CONCRETE FLAT TOP		
4A	42	EA	REMOVAL AND REPLACEMENT OF MANHOLE FRAME, COVER AND CONCRETE COLLAR WITH CAST-IRON FRAME AND COVER		
5A	17	EA	STRUCTURAL INSERT BENCH PREPARATION		
6A	133	VF	MANHOLE REHABILITATION WITH 54" DIAMETER STRUCTURAL INSERTS ON 60" MANHOLES		
7A	37	EA	TRAFFIC CONTROL		
8A	1	LS	MOBILIZATION		
9A	1	LS	BYPASS PUMPING (SETUP 1): N 83RD AVE BETWEEN W LYNWOOD ST AND I-10 CANAL		
10A	1	LS	BYPASS PUMPING (SETUP 2): N 67TH AVE NORTH OF I-10 CANAL SOUTH OF MCDOWELL		
11A	1	LS	BYPASS PUMPING (SETUP 3): NORTH SIDE OF I-10 CANAL WEST OF N 55TH AVE		
12A	1	LS	BYPASS PUMPING (SETUP 4): N 59TH AVE BETWEEN W FILMORE ST AND W VAN BUREN ST		
13A	1	LS	BYPASS PUMPING (SETUP 5): N I-17 BETWEEN W ROOSEVELT ST AND W PORTLAND ST		
14A	1	LS	BYPASS PUMPING (SETUP 6): S 15TH AVE AND W MARICOPA ST		
19A	18	EA	OLD STREET CUT SURFACE RESTORATION		
1B	1443	SQFT	EPOXY COATING REHABILITATION IN MANHOLE ABOVE CHANNEL		
2B	461	SQFT	EPOXY COATING REHABILITATION IN MANHOLE CHANNEL		
3B	39	EA	REMOVAL AND REPLACEMENT OF MANHOLE FRAME, COVER AND CONCRETE COLLAR WITH CAST-IRON FRAME AND COVER		
4B	20	EA	STRUCTURAL INSERT BENCH PREPARATION		
5B	14	VF	MANHOLE REHABILITATION WITH 42" DIAMETER STRUCTURAL INSERTS ON 48" MANHOLES		
6B	390	VF	MANHOLE REHABILITATION WITH 54" DIAMETER STRUCTURAL INSERTS ON 60" MANHOLES		
7B	32	EA	TRAFFIC CONTROL		
8B	1	LS	MOBILIZATION		

9B	1	LS	BYPASS PUMPING (SETUP 1): W SOUTHERN AVE BETWEEN S 55TH AVE AND S COTTONFIELD DR		
10B	1	LS	BYPASS PUMPING (SETUP 2): S 48TH ST AND E BEVERLY RD		
11B	1	LS	BYPASS PUMPING (SETUP 3): S 47TH PL BETWEEN E UNIVERSITY DR AND E HILTON AVE		
16B	1	EA	NEW STREET CUT SURFACE RESTORATION		
17B	15	EA	OLD STREET CUT SURFACE RESTORATION		
1C	1705	SQFT	EPOXY COATING REHABILITATION IN MANHOLE ABOVE CHANNEL		
2C	530	SQFT	EPOXY COATING REHABILITATION IN MANHOLE CHANNEL		
3C	30	EA	REMOVAL AND REPLACEMENT OF MANHOLE FRAME, COVER AND CONCRETE COLLAR WITH CAST-IRON FRAME AND COVER		
4C	15	EA	STRUCTURAL INSERT BENCH PREPARATION		
5C	217	VF	MANHOLE REHABILITATION WITH 54" DIAMETER STRUCTURAL INSERTS ON 60" MANHOLES		
6C	24	EA	TRAFFIC CONTROL		
7C	1	LS	MOBILIZATION		
8C	1	LS	BYPASS PUMPING (SETUP 1): S LAKEWOOD PKWY FROM S 34TH WAY TO S 36TH PL		
13C	2	EA	NEW STREET CUT SURFACE RESTORATION		
14C	11	EA	OLD STREET CUT SURFACE RESTORATION		
15	1	AL	UNIFORMED OFF DUTY LAW ENFORCEMENT OFFICER (ALLOWANCE)	\$70,000	\$70,000
16	1	AL	CONSTRUCTION WATER (ALLOWANCE)	\$15,000	\$15,000
17	1	AL	FIELD VARIATIONS (ALLOWANCE)	\$200,000	\$200,000
18	1	AL	OWNER'S CONTINGENCY (ALLOWANCE)	\$100,000	\$100,000

TOTAL BID FOR ALL UNIT PRICE ITEMS: \$

- A = Buckeye Rd & 83rd Ave Package
- B = Baseline Rd & 48th St Package
- C = I-10 & Chandler Blvd Package