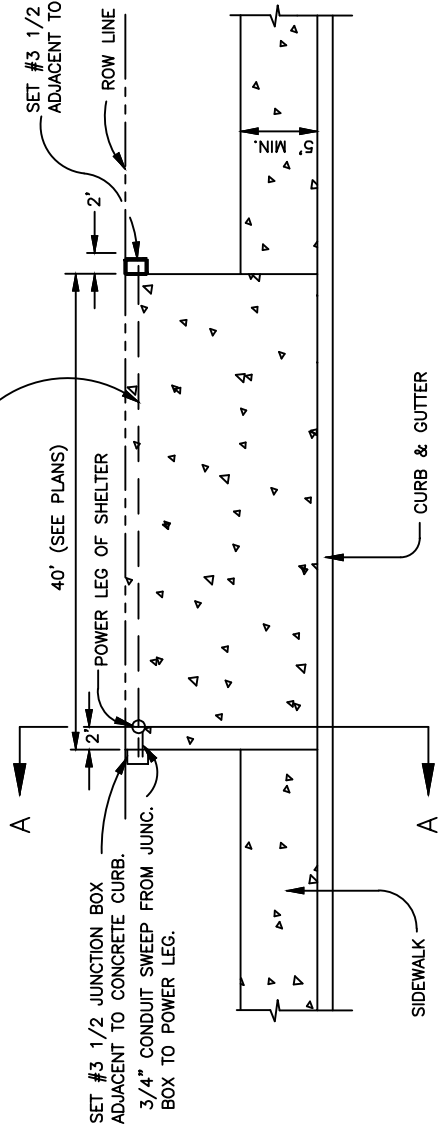
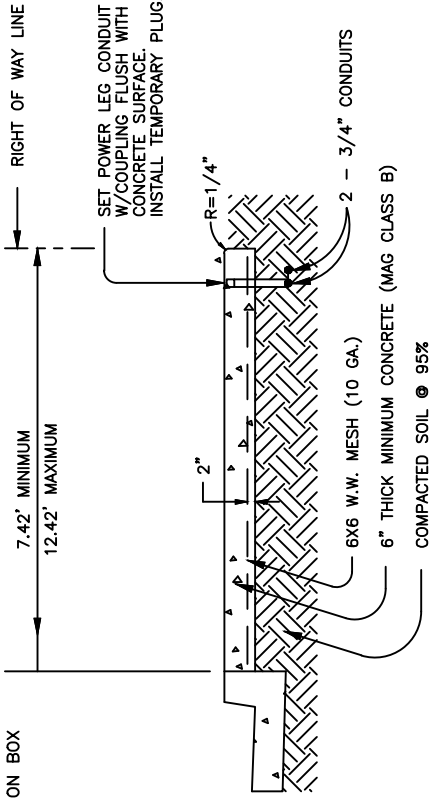


INSTALL 3/4" CONDUIT FROM JUNCTION BOX TO JUNCTION BOX PRIOR TO PLACEMENT OF CONCRETE.

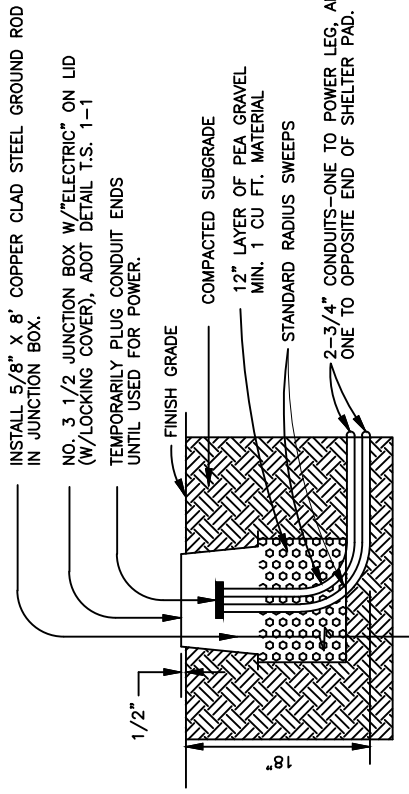


PLAN VIEW

SET #3 1/2 JUNCTION BOX ADJACENT TO CURB.



SECTION A - A



SLEEVE SWEEP & JUNCTION BOX DETAIL

NOTES:

1. ACTUAL PLAN LAYOUT MAY VARY. ALL OTHER DETAIL INFORMATION REMAINS THE SAME. SEE PLANS FOR SPECIFIC LOCATIONS AND DIMENSIONS OF BUS SHELTER PAD.
2. ANY SHELTER OR BUS STOP FURNITURE PLACEMENT SHALL BE LOCATED TO PROVIDE A MIN. 5 FT. WIDE CLEAR SIDEWALK.
3. DECORATIVE PAVEMENT OPTIONS MAY INCLUDE EXPOSED AGGREGATE 1/4" (NO LARGER) WITH DESIGN STRENGTH OF 4000 PSI MINIMUM. OTHER OPTIONS INCLUDING COLOR (TO MATCH SURROUNDINGS) AND STAMPING WILL BE CONSIDERED. CONCRETE MIX DESIGN THROUGH THE CITY OF PHOENIX MATERIALS LAB. DECORATIVE OPTIONS TO BE APPROVED BY THE CITY OF PHOENIX. PAVERS ARE NOT TO BE USED.
4. ELECTRICAL CONDUITS AND JUNCTION BOXES SHALL NOT BE REQUIRED UNLESS REQUESTED.
5. ALL CONDUIT SHALL BE P.V.C. SCHEDULE 40, U.L. LISTED.
6. ALL COSTS ASSOCIATED WITH ELECTRICAL AND RELATED ITEMS SHOWN ON THESE DETAILS (CONDUITS, JUNCTION BOXES, GROUND ROD, ETC.) SHALL BE CONSIDERED INCLUDED IN THE COST OF THE PAY ITEM FOR CONCRETE BUS SHELTER PAD.
7. BUS BAY PAVEMENT, CONCRETE PAD, CONCRETE CURB, SINGLE CURB, CURB & GUTTER, SIDEWALKS, & DRIVEWAYS ARE SEPARATE PAY ITEMS.
8. SHELTER PADS AND DRIVEWAYS SHALL BE LOCATED TO PROVIDE MINIMUM INTERSECTION SIGHT DISTANCE IN ACCORDANCE WITH CURRENT AASHTO STANDARDS (CASE IIIA).

DETAIL NO.  
P1260



BUS SHELTER/ACCESSORY PAD  
BUS STOP

APPROVED  
*[Signature]*  
ACTING CITY ENGINEER

7/31/08  
DATE

DETAIL NO.  
P1260