



City of
Phoenix Office of
the City Engineer
Design and Construction
Procurement 200 W.
Washington Street, 5th Floor
Phoenix, Arizona 85003-1611

PROJECT NO. 8640600010
EDISON PARK ACTIVITY HUB - 901 N. 19TH STREET (COST CENTER 8640600210) HUD
RFX6000000864

ADDENDUM NO. 2

ISSUE DATE: April 3, 2020

As a public health precaution due to COVID-19 (coronavirus), City of Phoenix is closing all City facilities, including City Hall (200 W. Washington St.) and Planning & Project Delivery (1034 E. Madison Street) to the public except critical business can be done by appointment only.

Bidders are hereby notified that the Bidding and Contract Documents for the above project, for which Bids are to be received on **Tuesday, April 7, 2020**, are amended as follows:

Delete:

BIDS WILL BE DUE: TUESDAY, APRIL 7, 2020 AT 2:00 P.M.
ON 5TH FLOOR, ROOM 5 WEST IN BID BOX

BIDS WILL BE READ: TUESDAY, APRIL 7, 2020 AT 2:00 P.M.
ON 5TH FLOOR, ROOM 5 WEST
PHOENIX CITY HALL
200 W. WASHINGTON STREET
PHOENIX, AZ 85003-1611
*All times are local Phoenix time

Replace with:

BIDS WILL BE DUE: TUESDAY, APRIL 7, 2020 AT 2:00 P.M.
CITY HALL 1ST FLOOR, ATRIUM JUST BEYOND SECURITY CHECK POINT IN BID BOX

BIDS WILL BE READ: TUESDAY, APRIL 7, 2020 AT 2:00 P.M.
VIA WEBEX PHONE ACCESS
PHOENIX CITY HALL
*All times are local Phoenix time

The public will be able to call the WebEx phone number and listen to the Bid Opening live, as follows:

Bid Opening Meeting number (access code): 288 362 783

Join by phone

Tap to call in from a mobile device (attendees only)
+1-415-655-0001 US Toll
Global call-in numbers [cityofphoenix.webex.com]

Join from a video system or application

Dial 288362783@cityofphoenix.webex.com
You can also dial 173.243.2.68 and enter your meeting number.

Join using Microsoft Lync or Microsoft Skype for Business

Dial 288362783.cityofphoenix@lync.webex.com
Need help? Go to <http://help.webex.com> [help.webex.com]

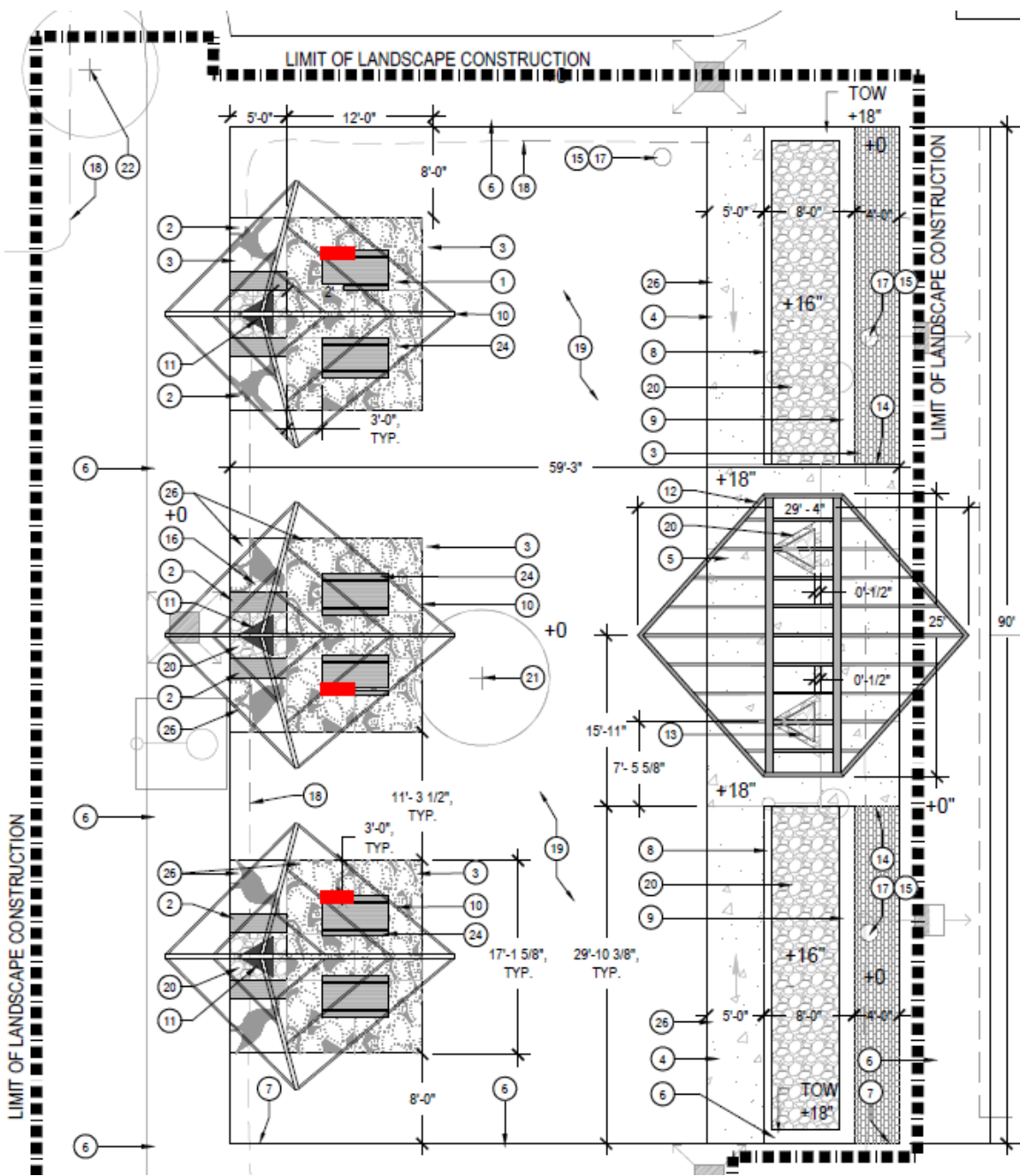
CHANGES TO DRAWINGS:

1. Sheet LA-102 – Keynote 1

The original specification stated: “The model FBF-56 Special, specifying a 6’ length with (2) 1’ extensions to be ADA with 4’ benches standard surface mount”

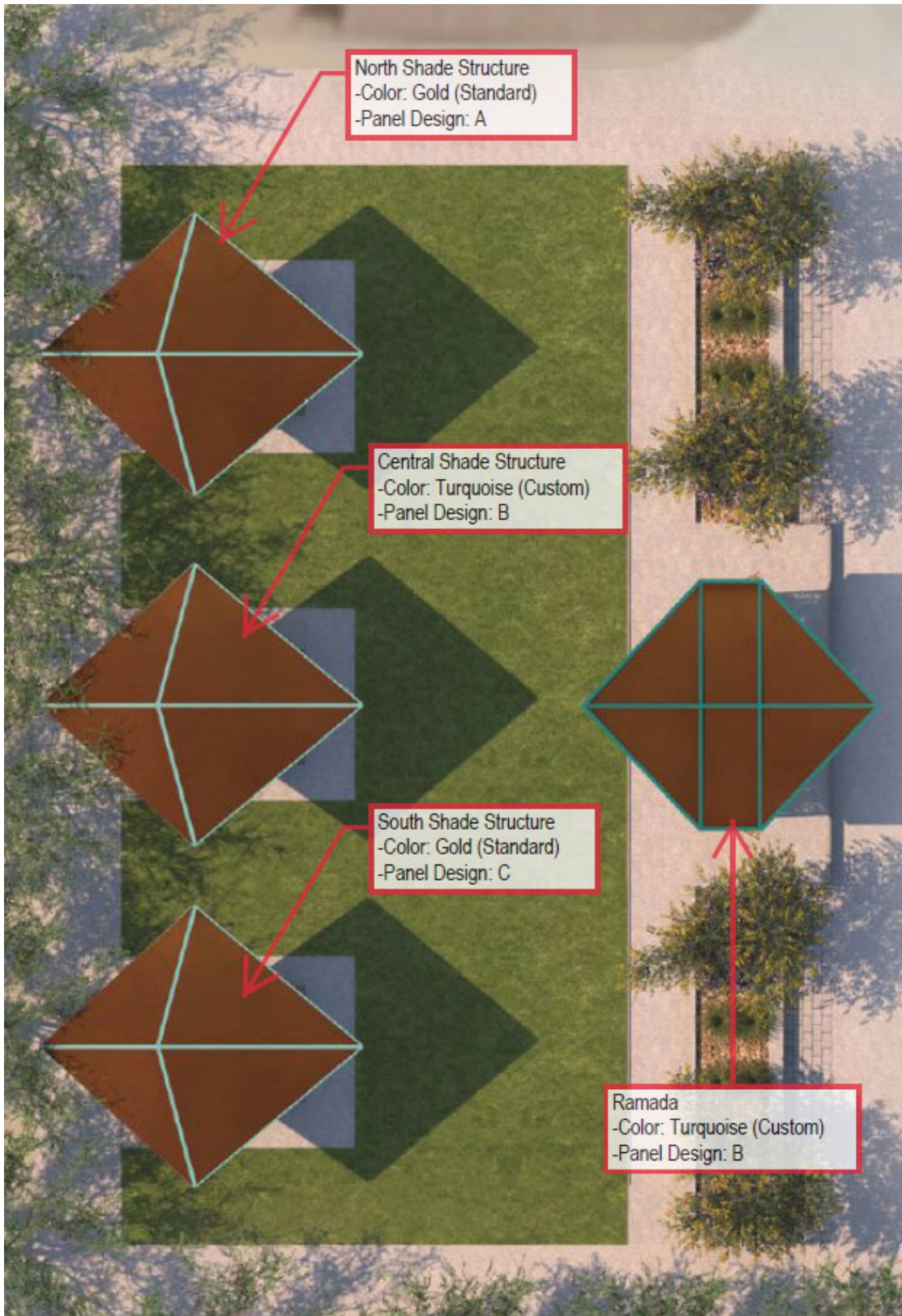
Revise note to read: Victor Stanley FBF-56, 6’ length table and bench set. In three locations, provide three (3) 4’ length benches, installed to accommodate ADA access.

The graphic below depicts the locations of ADA accessibility. The remaining tables and benches are standard products.



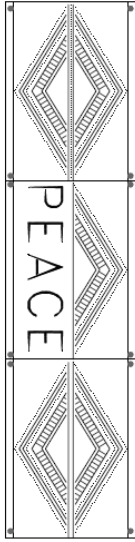
2. Sheet LA-202

Updated Art Panel Layout and Shade Structure Colors. Please see below for updates:

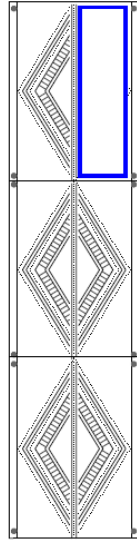


COLUMN

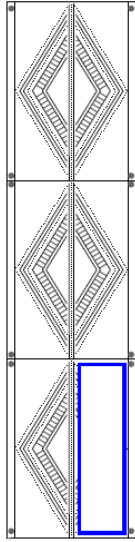
NW Face



E Face



SW Face



Laser cut text to be added to blue boxes on each column face, to match font and style of text on first column face.

1 word per face; 3 words per column.

Laser cut words to be chosen from options listed to the right. Each word is to be used no more than once.

LASER CUT WORDS

(3 PER COLUMN, 1 PER FACE):

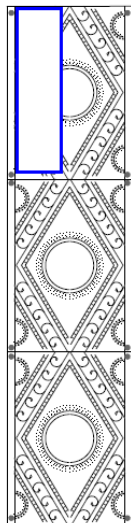
1. Community
2. Familia
3. Respect
4. Believe
5. Harmony
6. Peace
7. Trust
8. Culture
9. Amor
10. Esperanza
11. History
12. Amigos
13. Edison
14. Soluna
15. Aeroterra

NORTHERN COLUMN

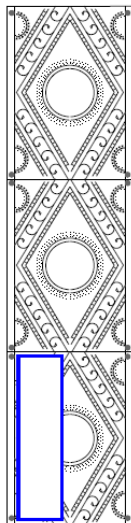
NW Face



E Face

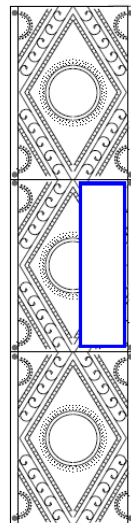


SW Face

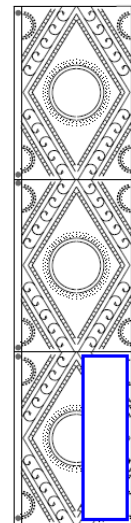


SOUTHERN COLUMN

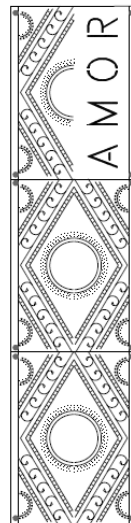
NW Face



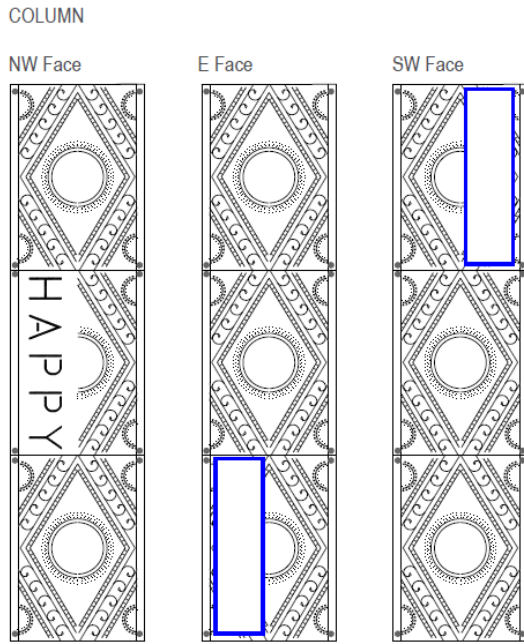
E Face



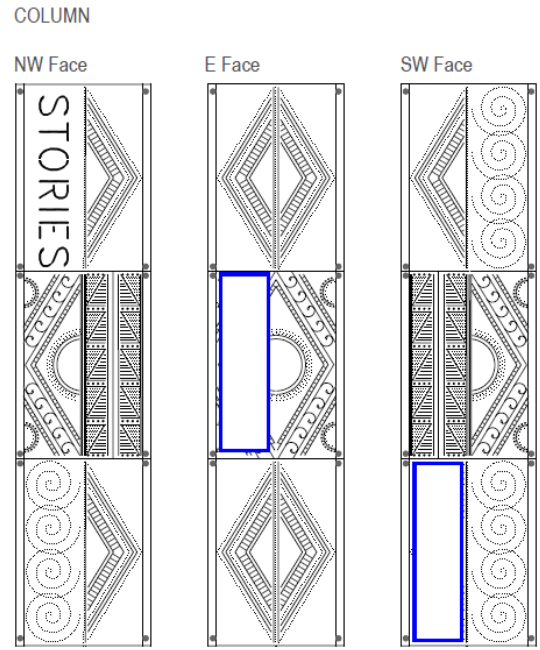
SW Face



ILLUMINATED ART COLUMN PANELS
AT CENTRAL SHADE STRUCTURE



ILLUMINATED ART COLUMN PANELS
AT SOUTH SHADE STRUCTURE



EDISON PARK ACTIVITY HUB | ART CONCEPTS | CUSTOM LASER PATTERN B

EDISON PARK ACTIVITY HUB | ART CONCEPTS | CUSTOM LASER PATTERN C

NOTE: Bidders must acknowledge receipt of this Addendum by listing the number and date, where provided, on the Addenda Acknowledgement Form P-1.

END OF ADDENDUM

Mary Estes
Design Principal – Norris Design

ARCHITECTS'S SEAL

